

DuraSystem®

安装说明

Mounting instructions

带卫生冲洗的隐藏式水箱 | Starck f 隐藏式水箱

wall carrier integrated hygienic flush | wall carrier Starck f

WD1023 000 060

WD1023 000 061

WD1024 000 060

WD1024 000 061



重要说明



电气安装

4

Important information

Electrical installation

6



安装, Installation

8



重要说明


zh

本安装说明是 Duravit 产品的一部分，安装前请务必仔细阅读。

目标读者和安装人员资格

座便器安装架只能由有资质的水管工安装。
电气安装只能由有资质的电工进行。

关键词与符号说明

 **危险** 表示如不避免将会导致死亡或严重伤害的危险情况。



请参阅本章节中的安装说明



请参阅电气安装章节



请参阅其他说明



冷水



水管安装



检查是否有泄漏以及密封性是否良好

> 所需操作

安全说明

电击可导致生命危险

接触电流会导致电击。

> 根据本国、欧盟和国际准则及标准进行电子装置安装。

健康风险和可能导致的产品损坏

> 座便器安装架应接入主供水管道的自来水。

> 请勿接入任何废水、混水、工业水、海水或其他未处理或半处理的水。

产品和/或财产损坏

违反当地和所在国家/地区的规章条例和标准可能会导致产品损坏和/或造成财产损失。

> 请务必遵守所在国家/地区的标准和当地安装规章条例。

安装之前

检查墙体的承重能力。

确保墙体为混凝土结构或实心墙。

墙体厚度应为 80 mm 以上，地面应为混凝土地面。

墙体应能承受在座便器中间部位施加 400 kg 的力，并且安装架和地面配件没有移位或松动。

SensoWash® 智能座便器（可选）

Duravit 建议安装智能座便器之前，先进行预安装。

> 提前确认水管连接和电源连接位置。

> 根据智能座便器的技术说明书安装供电线路。

安装说明

2 确定排污管位置

如果按参照标记设定座便器安装架的高度，

排污管的高度应为 220 mm。

座便器安装架的高度可单独调整：

> 按照座便器的技术图纸，根据排污管的位置确定座便器安装架高度。

21 **SensoWash® 智能座便器（可选）**

Duravit 建议安装智能座便器之前，先进行预安装。



电气安装



电源
最大额定功率
保险装置
RCD

100-240V 50-60 Hz

10W

$I_N = 16A$

$I_{\Delta N} \leq 30 mA$



危险

电击可导致生命危险

- > 在安装前将电气元件与电源断开。
- > 检查所有元件是否无电压。
- > 避免意外接通供电。

23 为 SensoWash® 智能马桶敷设供电线路（可选）

- > 根据 SensoWash® 的技术参数安装电线。
- > 在安装好智能马桶之后方可接通电源。

24 预安装/规划

为马桶基体规划安装空间：

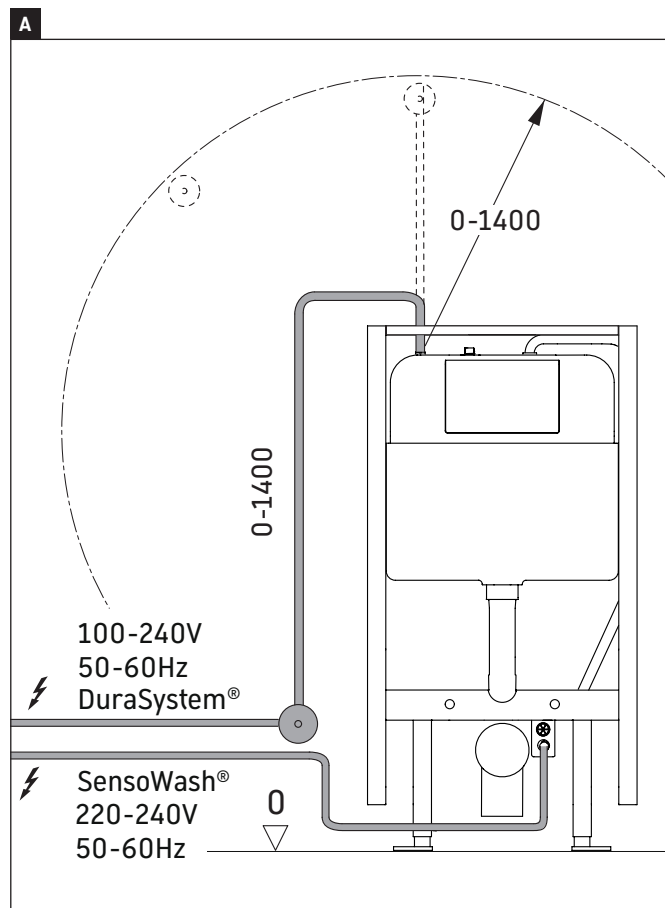
- 1400mm 内（图 A）
- 保护区 0 - 2 以外（图 B）
- > 铺设固定的电源引线：
 - 预接通单独的保险装置和故障电流保护装置（RCD）
 - 在保护区 0 - 2 之外（图 B）串接全相分离式主开关

27 - 31 安装基体套件

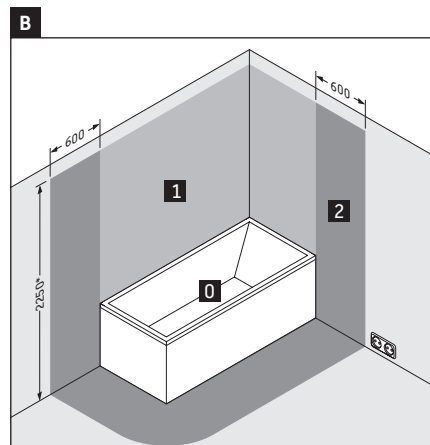
- > 将基体安装至规定位置。

40 - 43 连接 WC 元件

- > 将引线连接至变压器。



依据 DIN VDE 0100-701 标准的保护区



* 或固定安装的淋浴喷头/出水口的最大高度；以最大高度为准




Important information

The mounting instructions come as part of the Duravit product and must be read carefully prior to installation.

Target readership and qualifications

The toilet frame may only be installed by a qualified plumber. The electrical installation should only be carried out by qualified electricians.

Explanation of the key words and symbols

 **DANGER** Indicates a hazardous situation which, if not avoided, will result in death or serious injury.



Link to the **mounting instructions** in this section



Link to the **electrical installation** section



Link to other **instructions**



Cold water



Water installation



Inspect to check for leaks and leak-tightness

> Action required

Safety instructions

Risk of fatal electric shock

Contact with electricity can lead to an electric shock.

- > Carry out the electrical installation in accordance with the national, European and international directives and standards.

Health risk and potential product damage

- > Supply the toilet frame with tap water from the main water system.
- > Do not connect any waste water, grey water, industrial water, sea water or other untreated or semi-treated water.

Product and/or property damage

The breach of local and country-specific regulations and standards can cause damage to the product and/or property damage.

- > Observe the local installation regulations and any country-specific standards at all times.

Prior to the installation

Check the load-bearing capacity of the wall.

Make sure the wall is concrete structure or solid wall. The thickness of the wall shall be above 80 mm and the ground shall be made of concrete. When the force of 400 kg is applied to the middle of the toilet, the wall shall be able to bear this force, the frame and ground fixings shall not be displaced or loose.

SensoWash® shower toilet (optional)

Duravit recommends carrying out the preinstallation when subsequently installing the shower toilet.

- > Confirm the position of the water and power supply in advance.
- > Install the power supply line according to the technical instructions for the shower toilet.

Mounting instructions

2 Observing the position of the drain

If the height of the toilet frame is set on the reference marker, the height of the drain is at 220 mm. The height of the toilet frame can be adjusted individually:

- > Set the height of the toilet frame based on the position of the drain according to the technical drawing of the toilet.

21 SensoWash® shower toilet (optional)

Duravit recommends carrying out the pre-installation when subsequently installing the shower toilet.



Electrical installation



Power supply
Max. rated power
Circuit breaker
RCCB

100-240 V, 50-60 Hz
10 W
 $I_N = 16 \text{ A}$
 $I_{\Delta N} \leq 30 \text{ mA}$



DANGER

Risk of fatal electric shock

- > Disconnect electrical components from the power supply before the installation.
- > Check that all components are de-energised.
- > Prevent the power supply from being switched on accidentally.

23 Installing the power supply for the SensoWash® shower toilet (optional)

- > Install the power supply line according to the technical instructions for the SensoWash®.
- > Connect the power supply only when the shower toilet is installed.

24 Pre-installation/planning

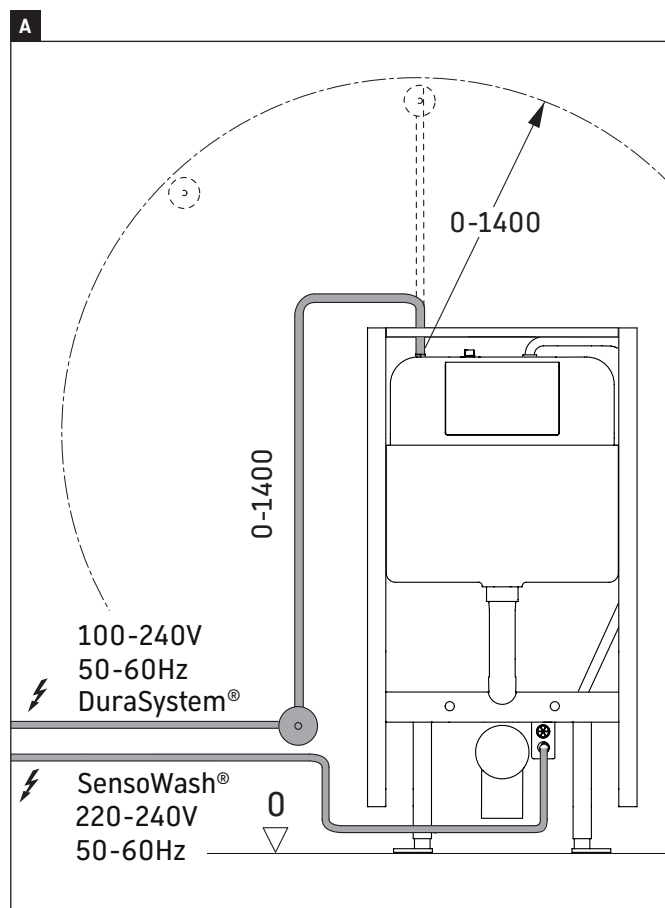
- > Plan a position for the concealed box:
 - within 1400 mm (diagram A)
 - outside the protection zones 0 – 2 (diagram B)
- > Install a permanent power supply line there:
 - Install a separate circuit breaker and residual-current circuit breaker (RCCB) upstream
 - Connect all pole disconnector mains switches upstream located outside the protection zones 0 – 2 (diagram B)

27 – 31 Mounting the installation set

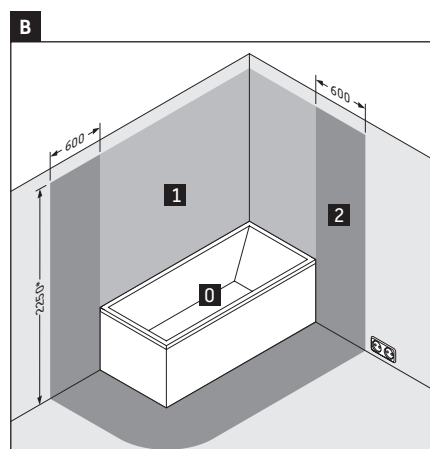
- > Position the concealed box at the designated point.

40 – 43 Connecting the toilet frame

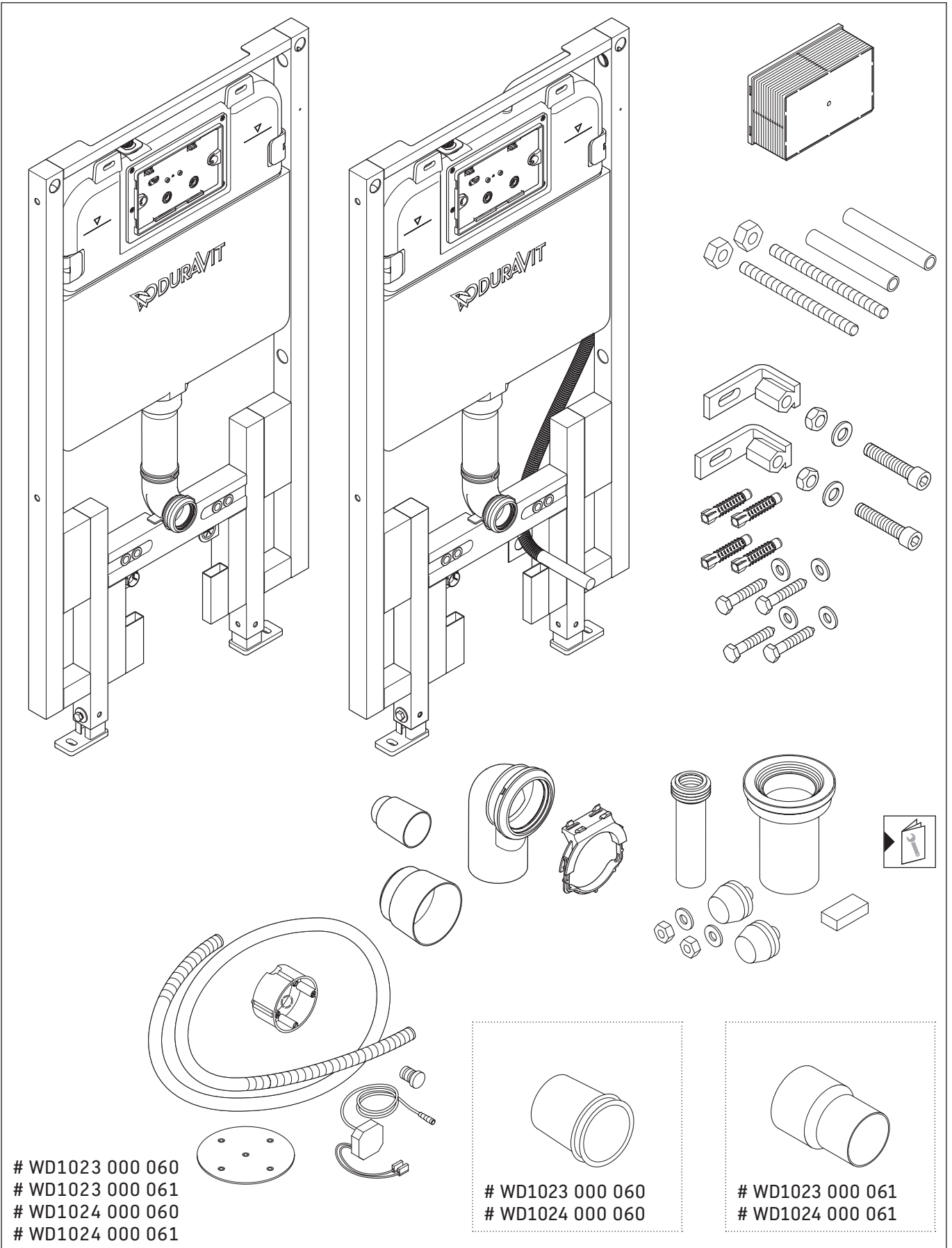
- > Connect the supply line to the transformer.



Safety areas in accordance with DIN VDE 0100-701



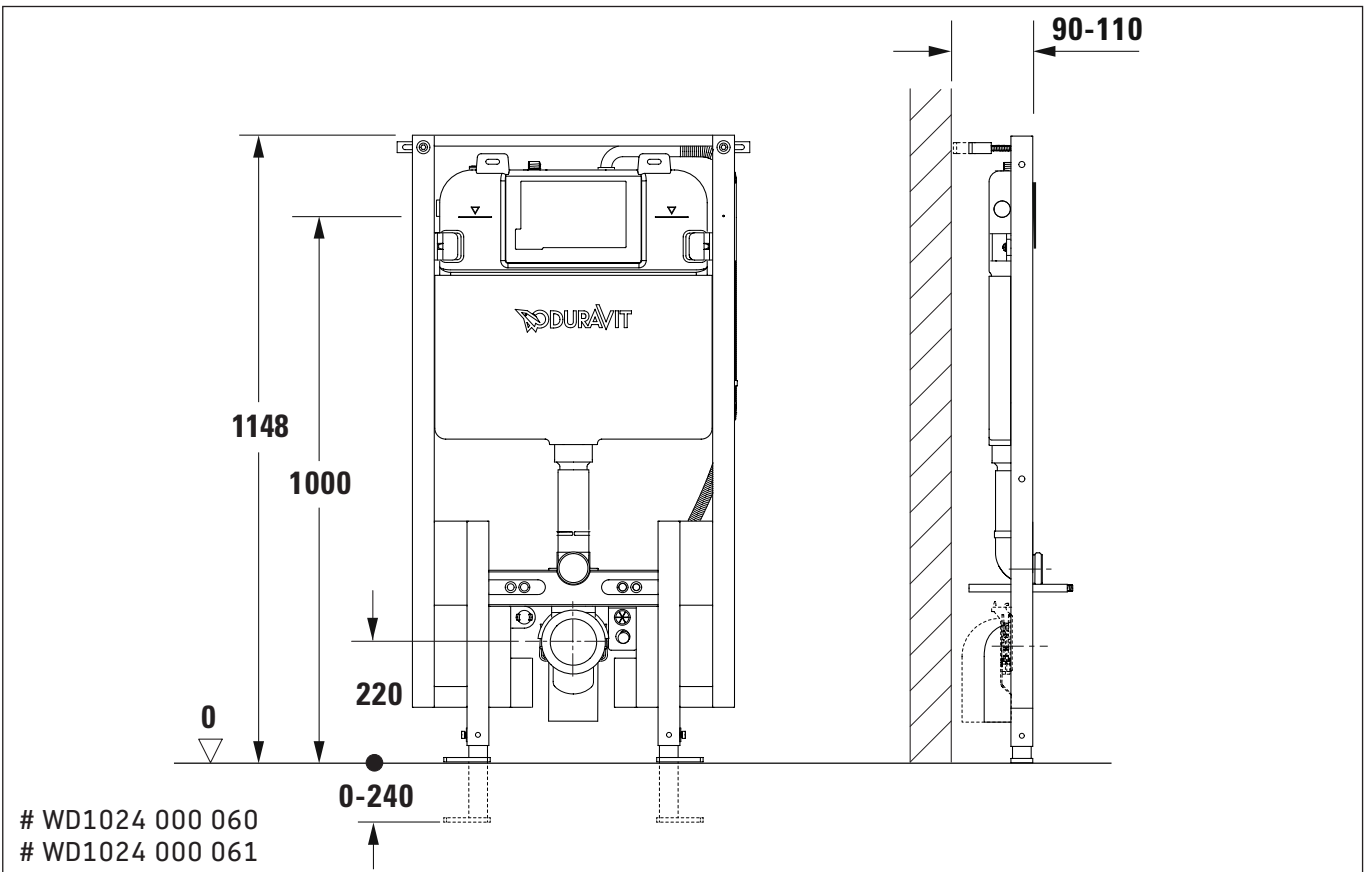
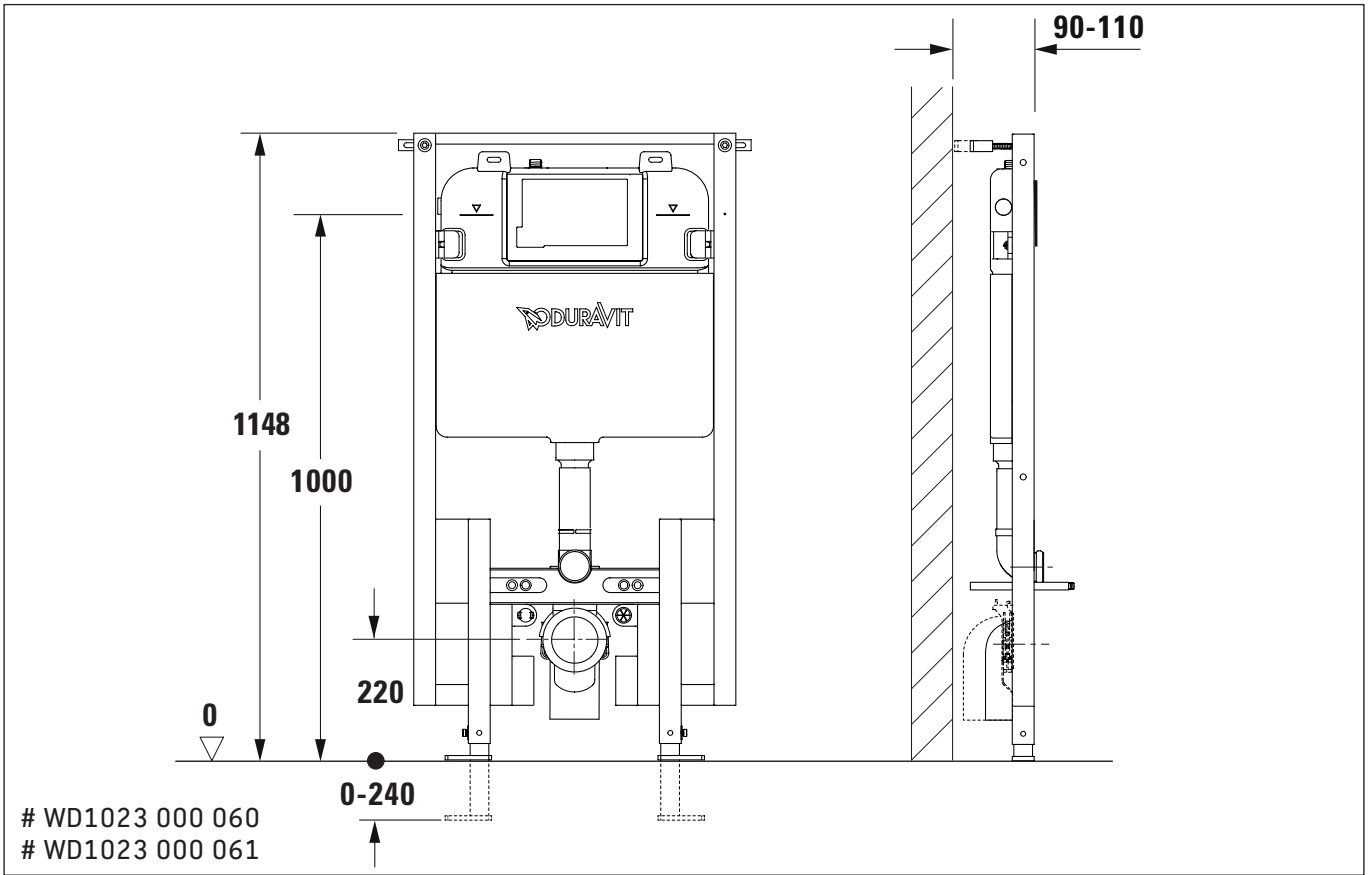
* or the height of the highest shower head / water outlet that is permanently installed, depending on which is higher

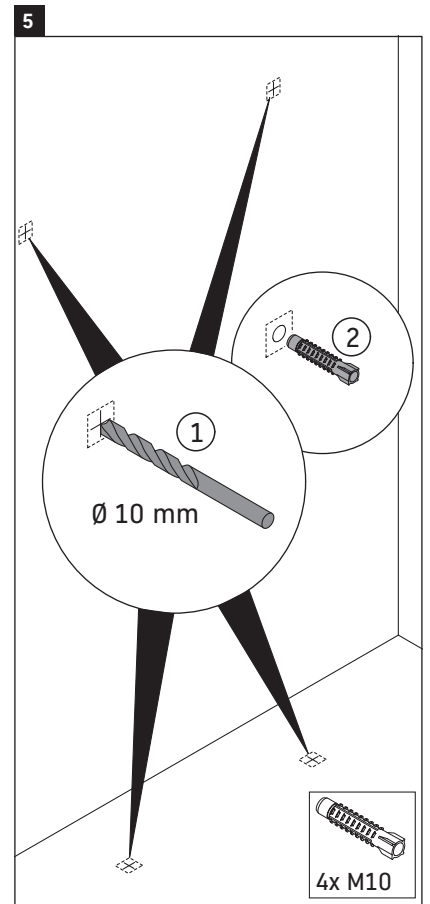
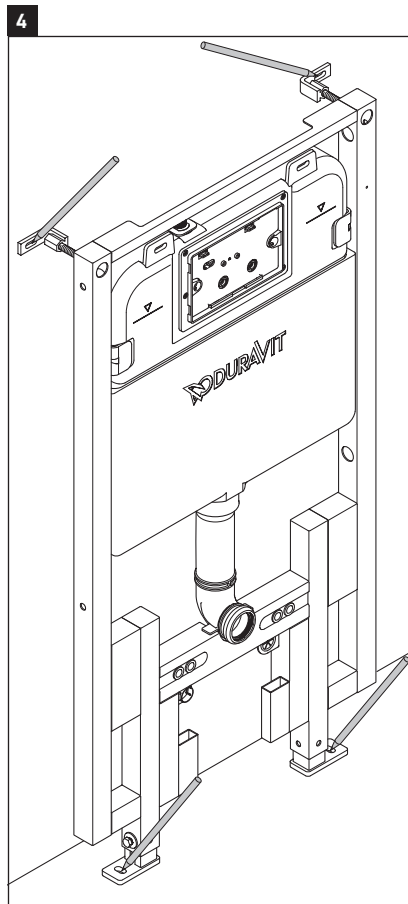
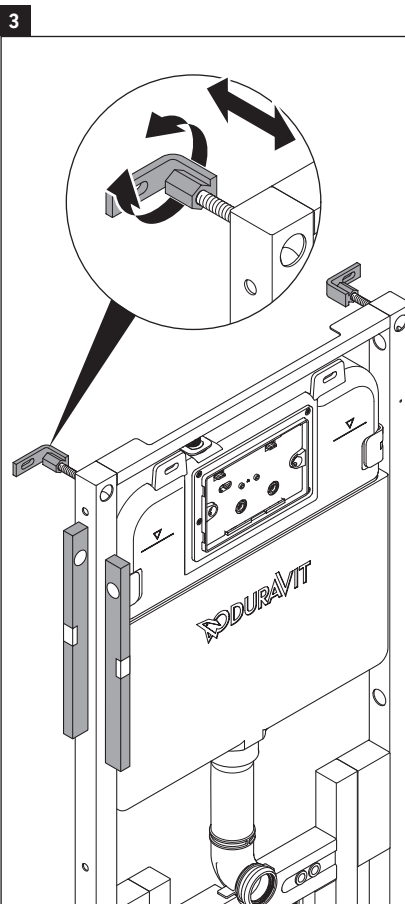
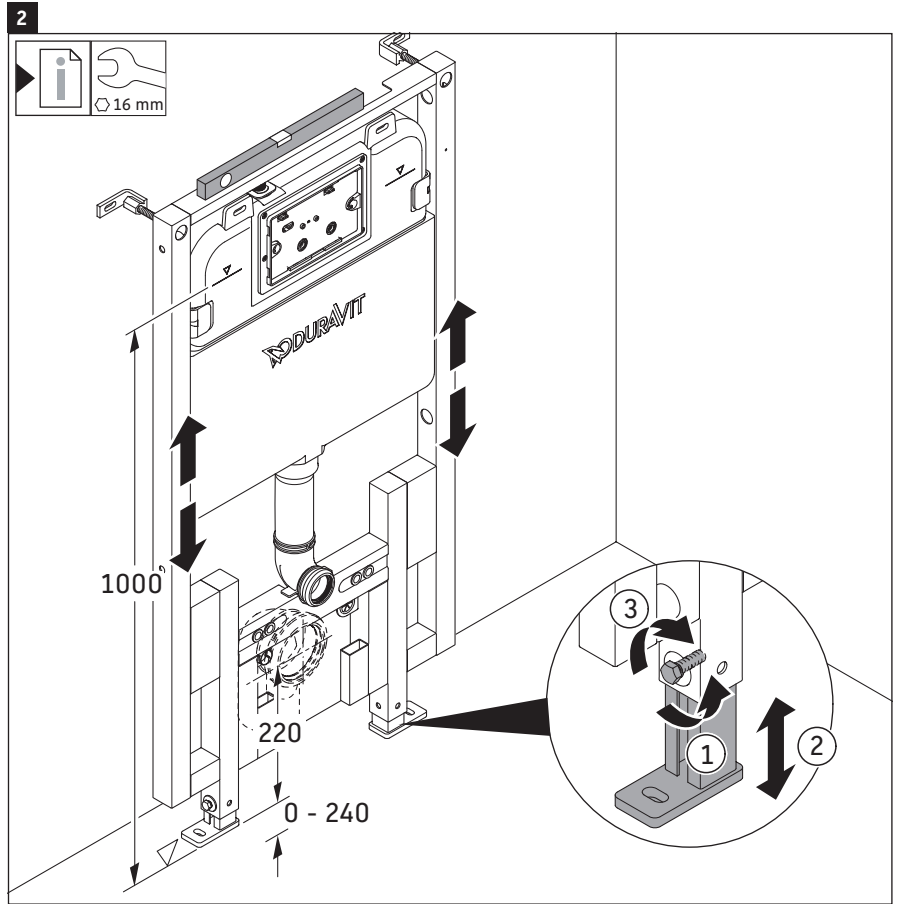
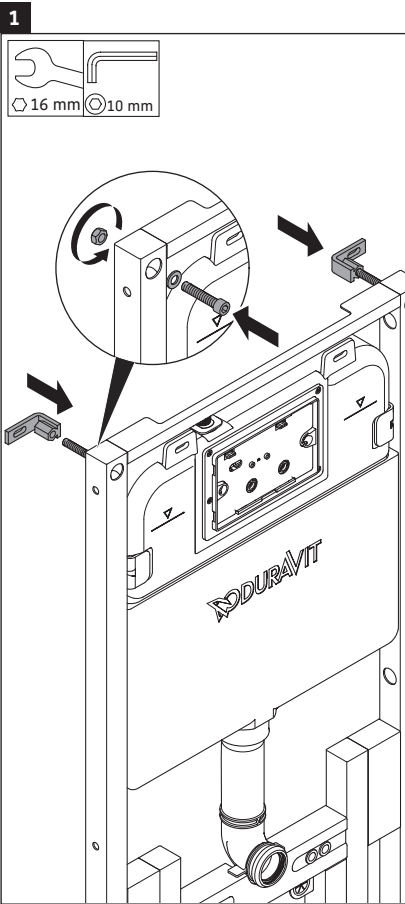


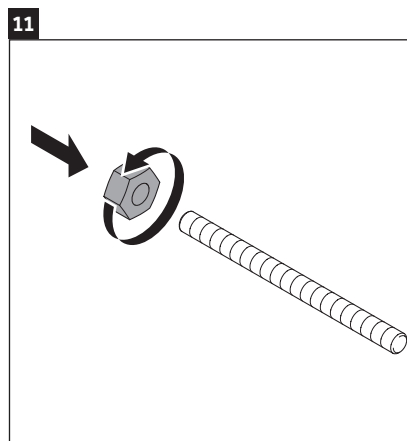
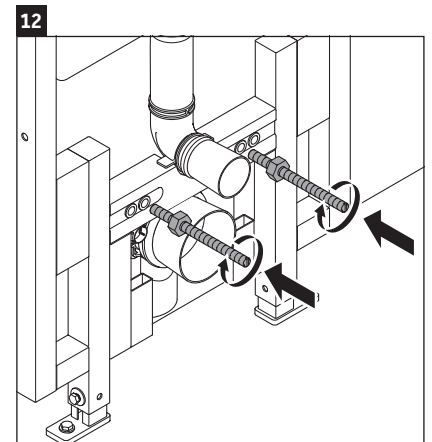
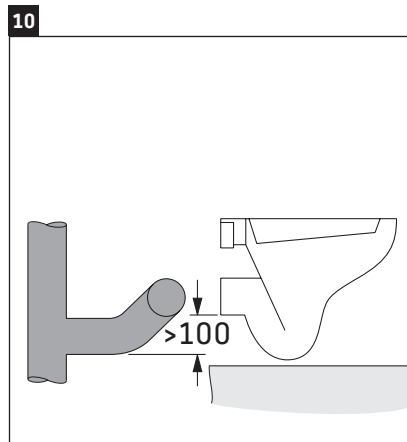
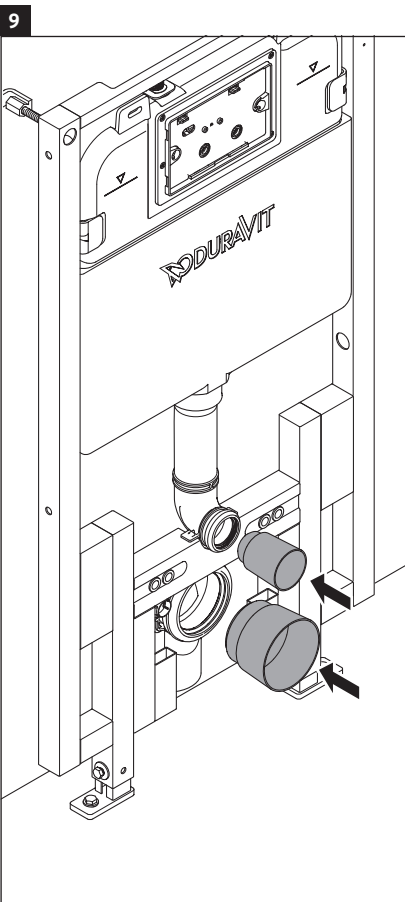
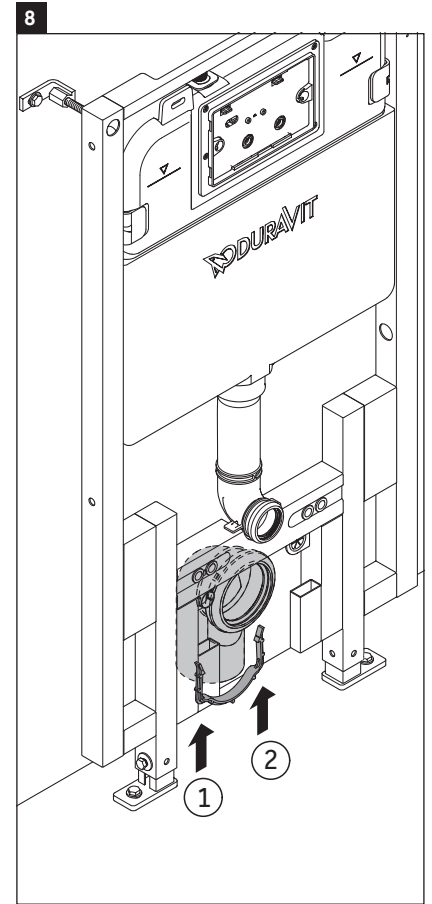
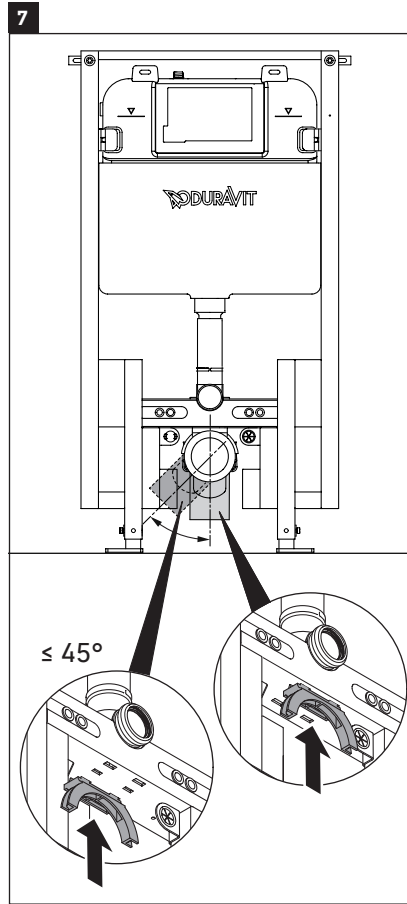
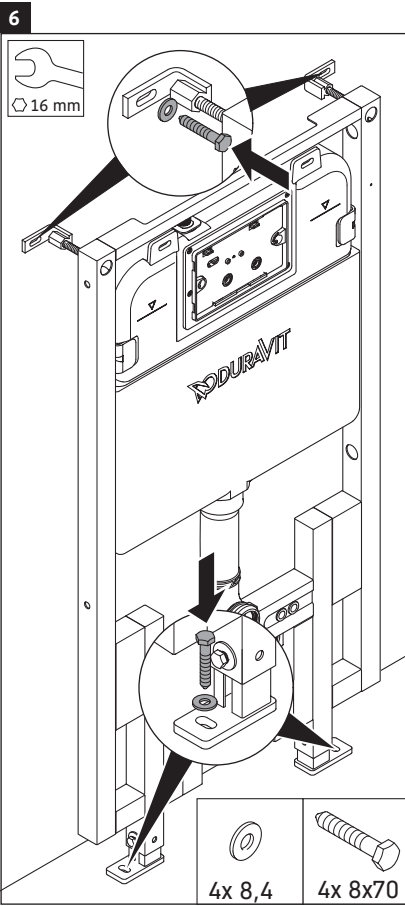
- # WD1023 000 060
- # WD1023 000 061
- # WD1024 000 060
- # WD1024 000 061

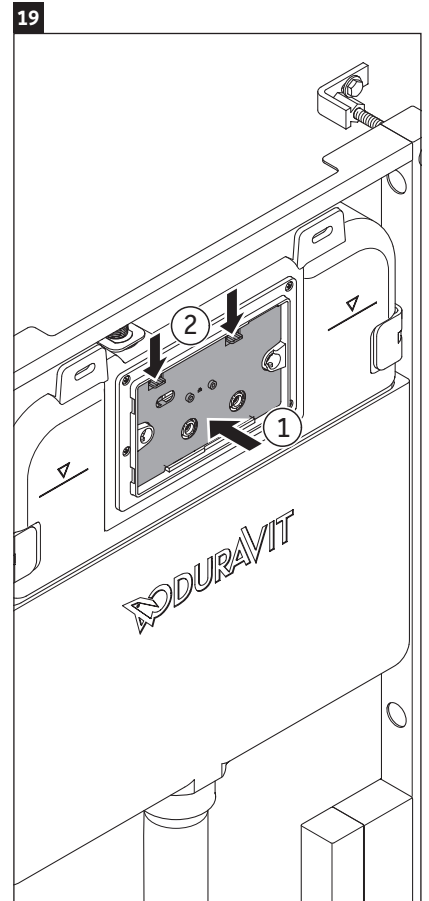
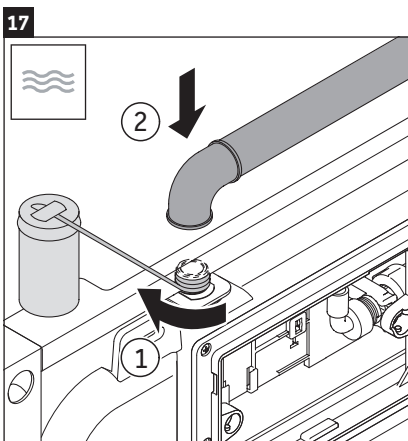
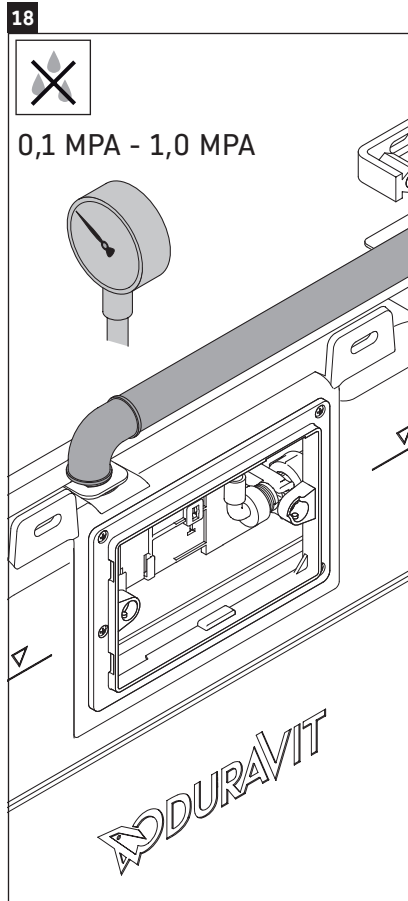
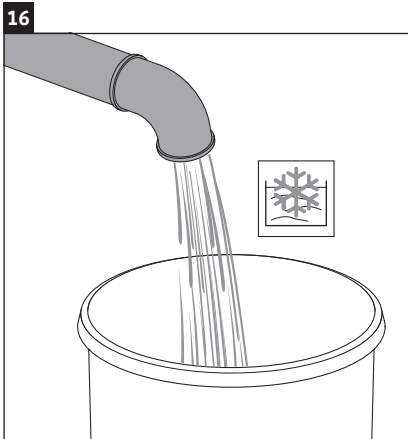
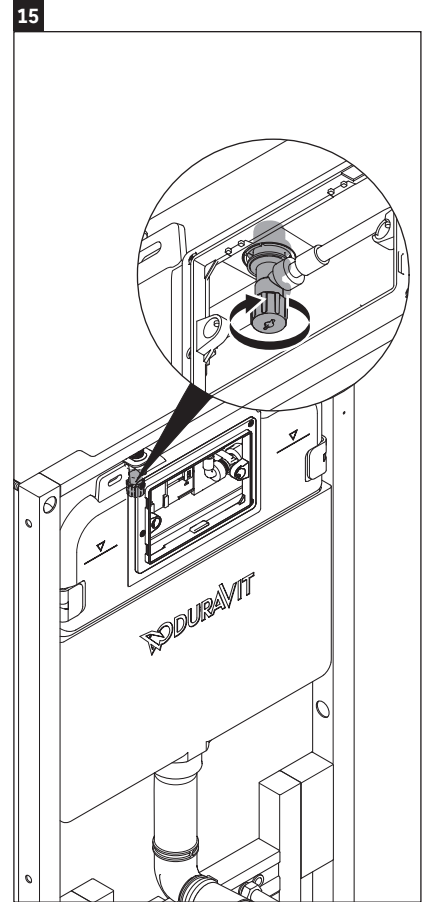
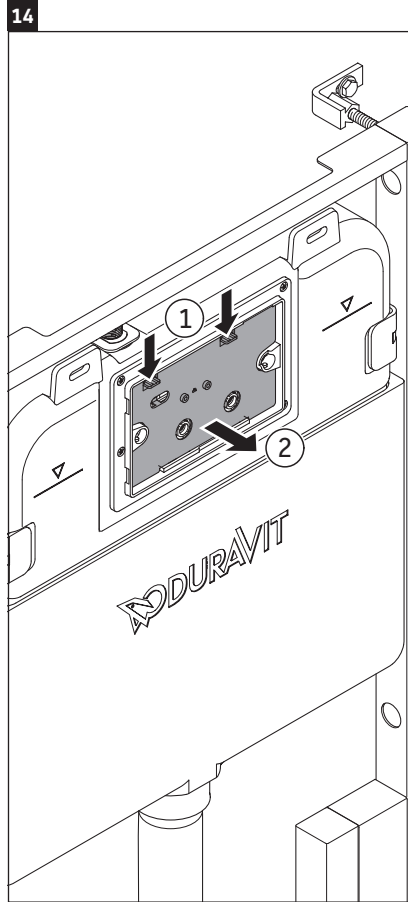
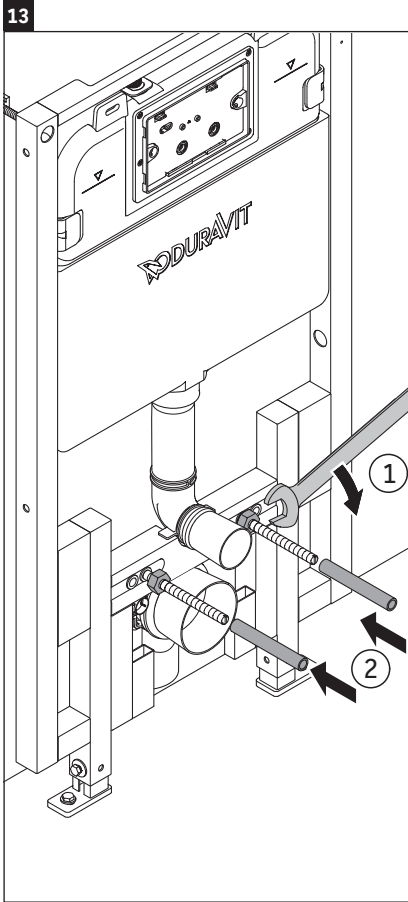
- # WD1023 000 060
- # WD1024 000 060

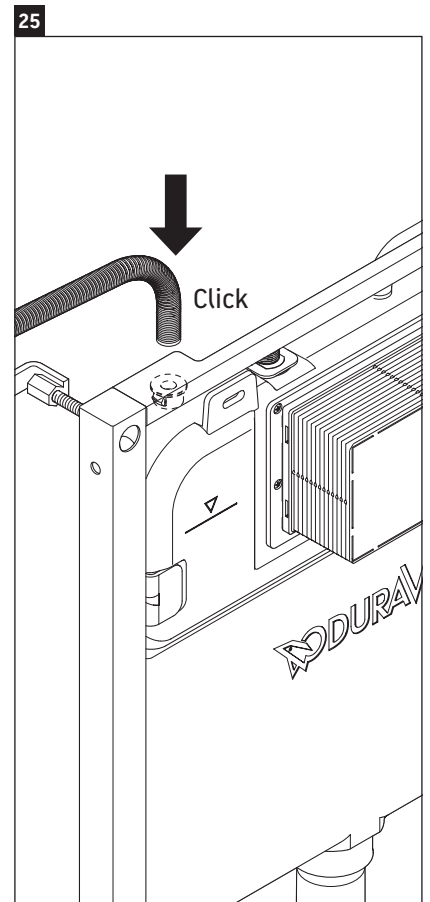
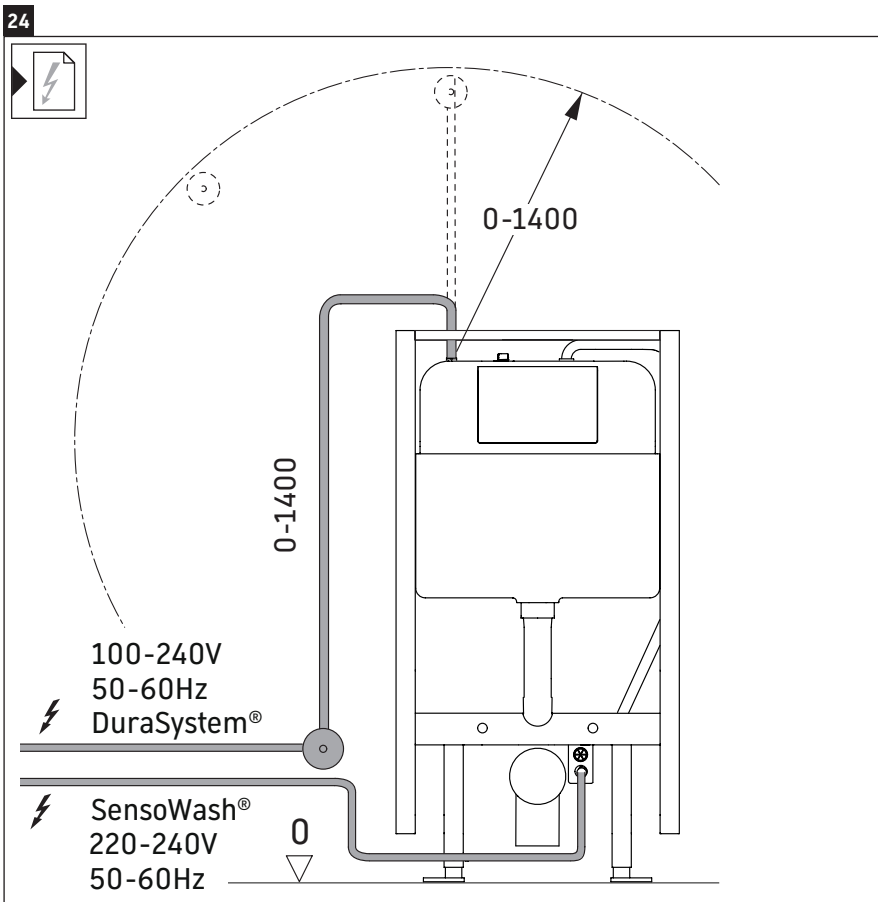
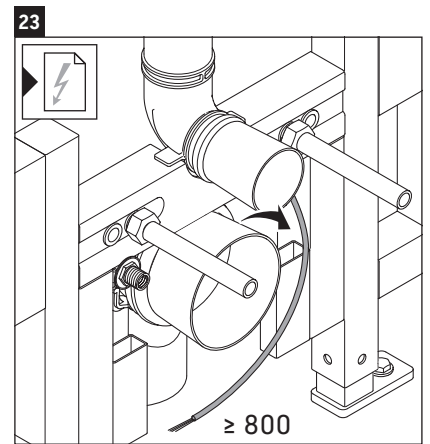
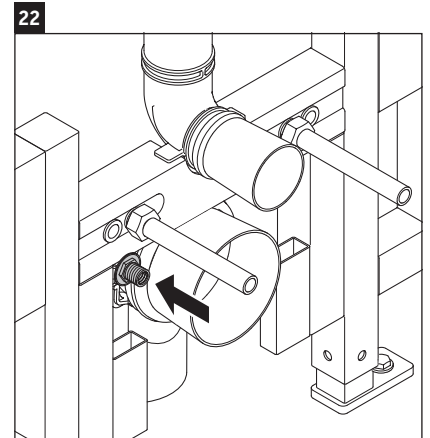
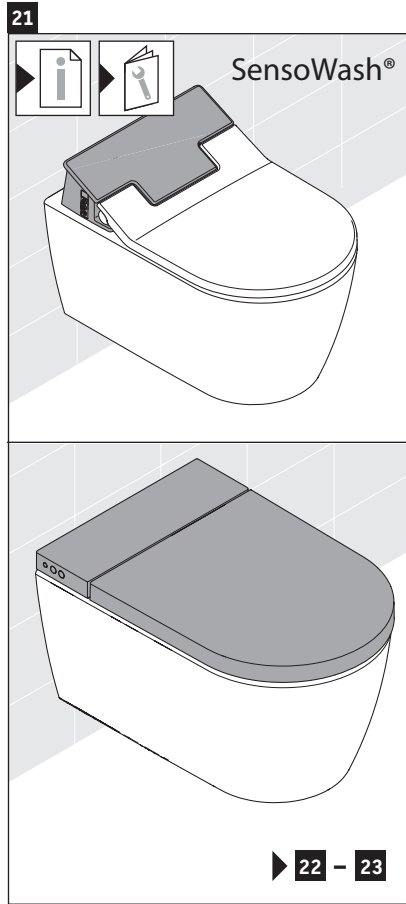
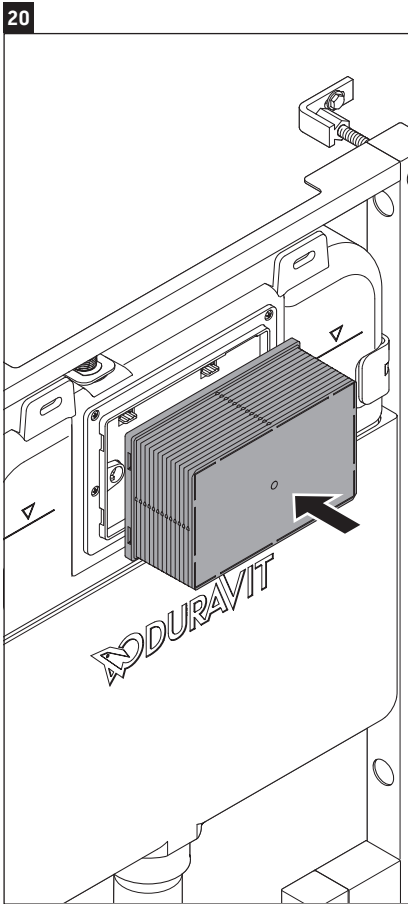
- # WD1023 000 061
- # WD1024 000 061

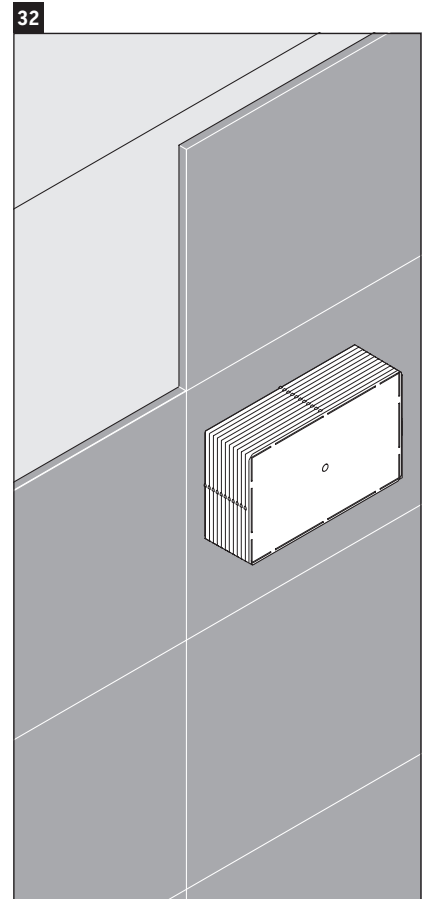
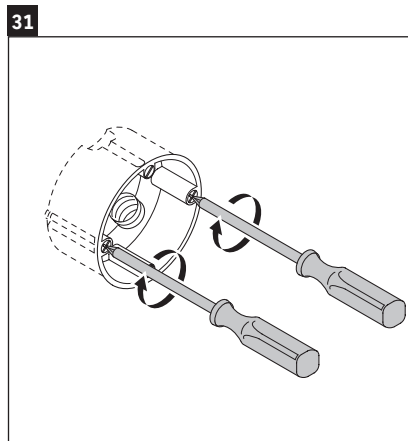
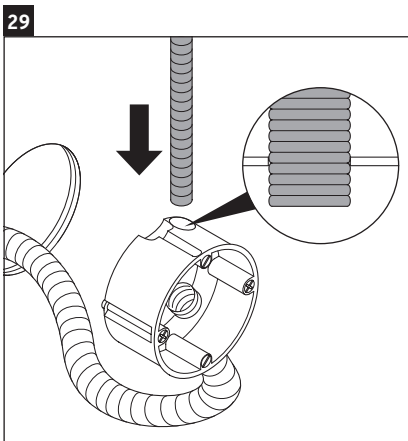
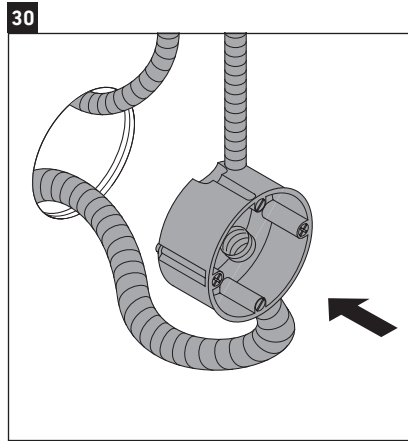
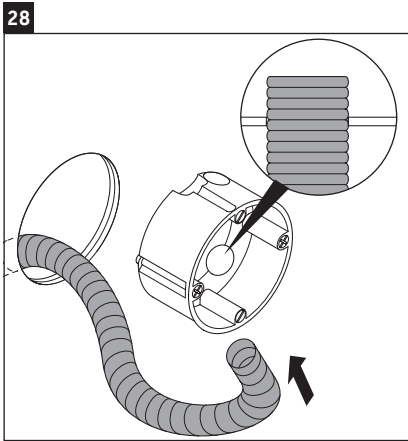
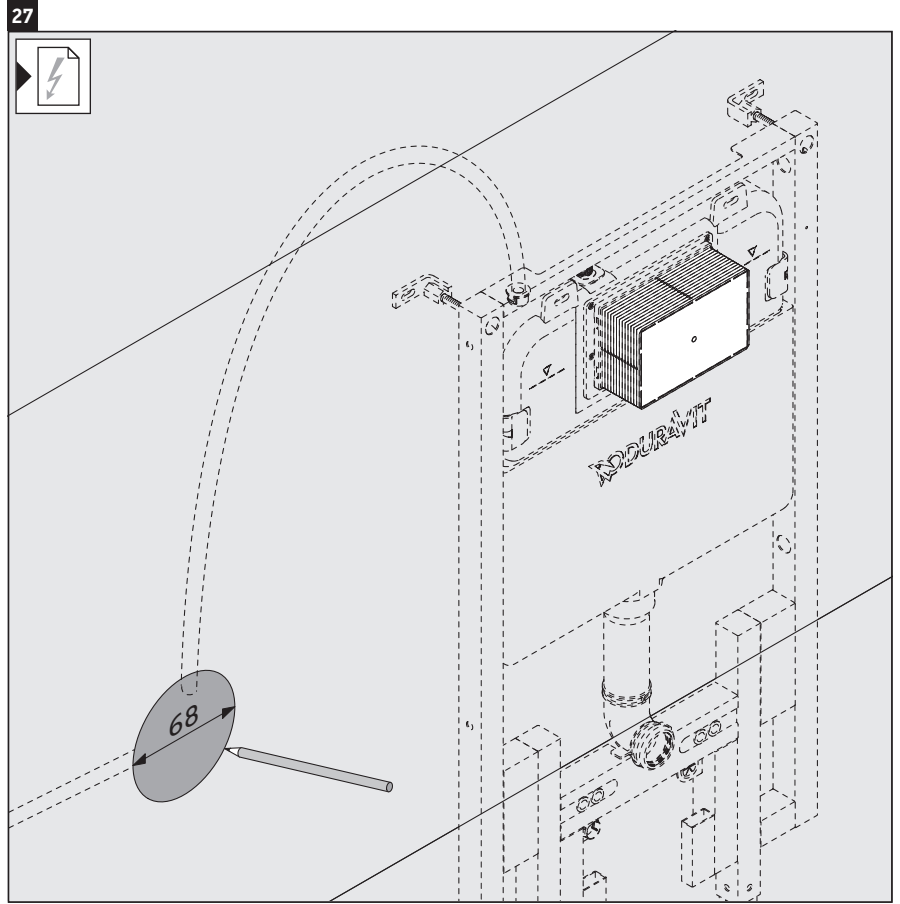
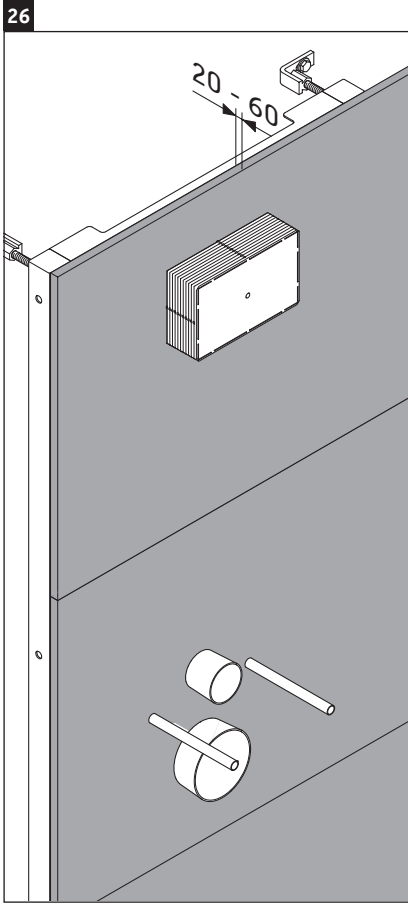


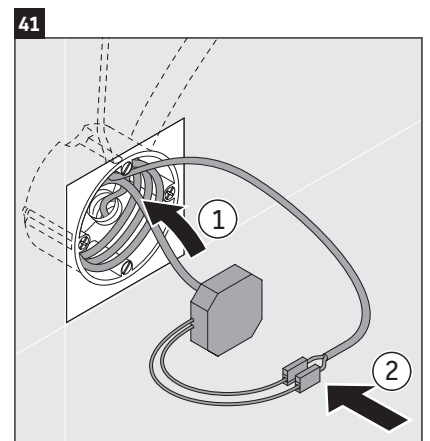
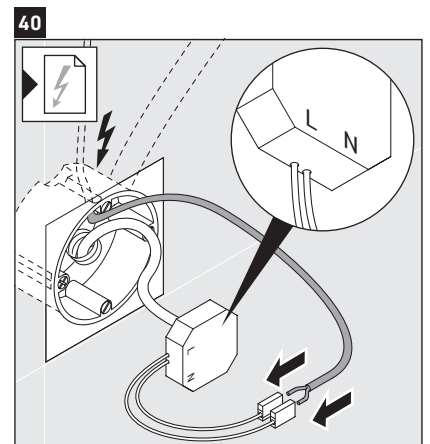
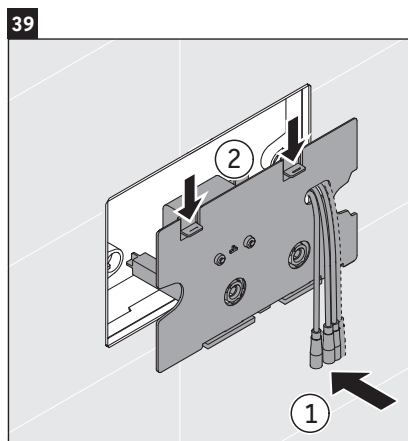
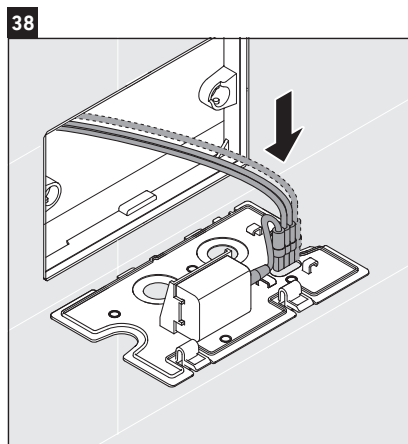
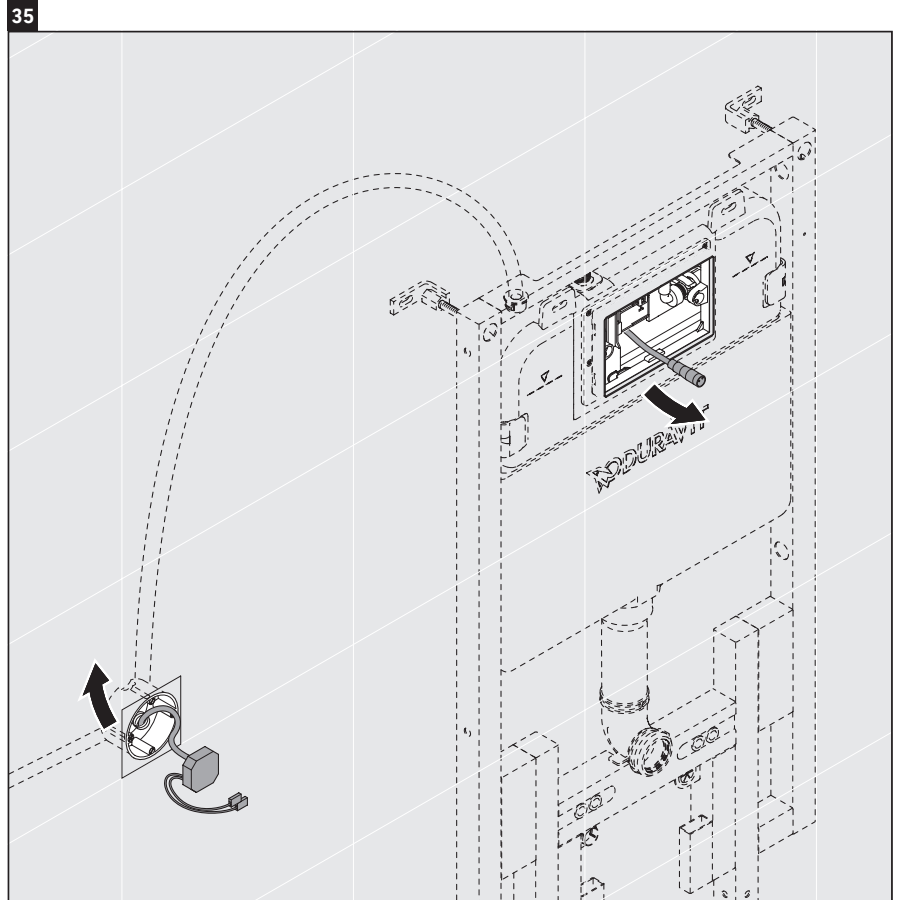
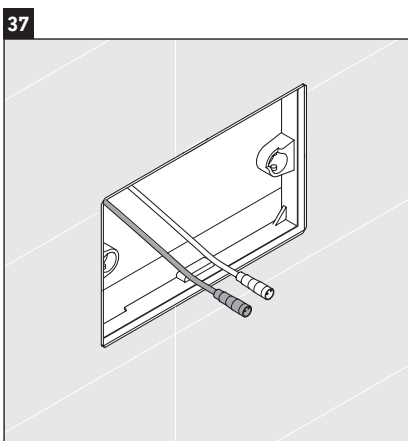
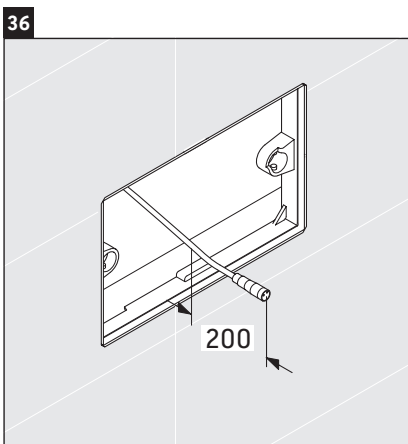
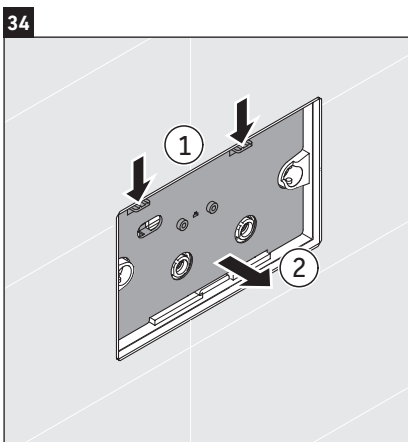
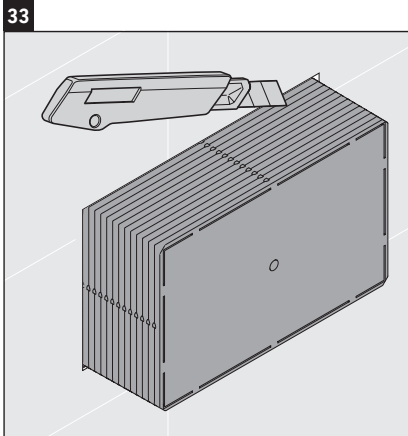


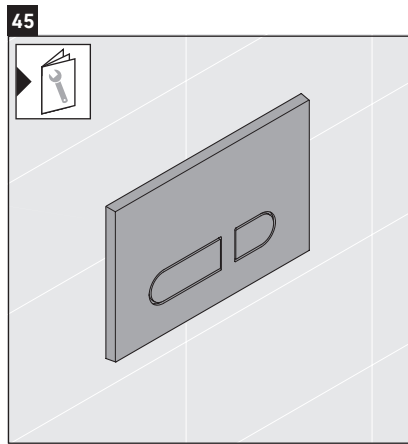
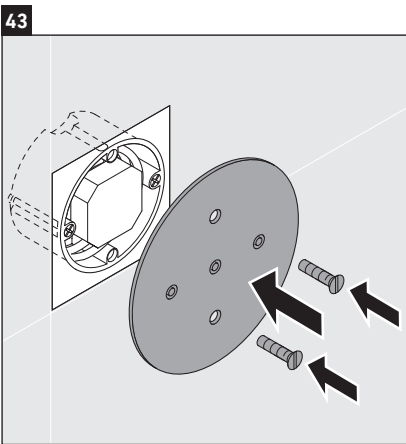
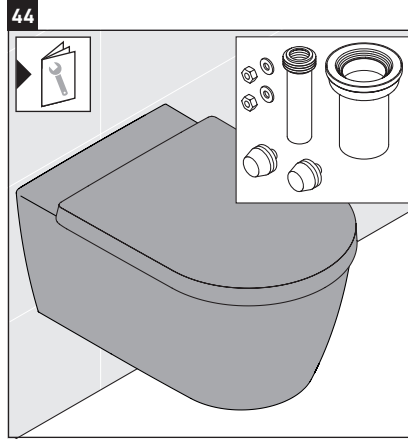
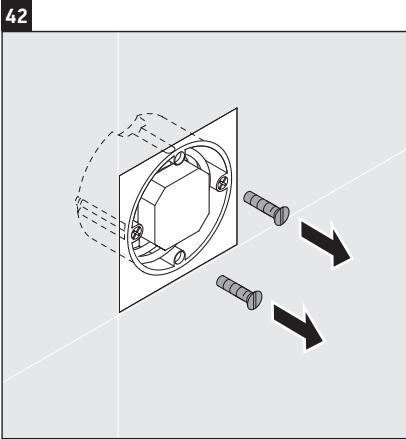












DURAVIT AG
P.O. Box 240
Werderstr. 36
78132 Hornberg
Germany
Phone +49 78 33 70 0
Fax +49 78 33 70 289
info@duravit.com
www.duravit.com

