

LAUFEN

Elektronische Systemsteuerung für 8.4206.5/6 und 8.4112.2

Système électronique pour 8.4206.5/6 et 8.4112.2

Sistema elettronico per il 8.4206.5/6 e 8.4112.2

Electronic System for 8.4206.5/6 and 8.4112.2

Sistema electrónico para 8.4206.5/6 y 8.4112.2

Elektronische systeembediening voor 8.4206.5/6 en 8.4112.2



Bitte sorgfältig aufbewahren!
A conserver précieusement!
Si prega di conservare con cura!
Please keep carefully!
Por favor, consérvese con cuidado!
Gelieve zorgvuldig te bewaren!

Spülprogramme

P1: STANDARD (Voreinstellung)

Geeignet für viele Installationen:
1-Liter Spülung nach jeder Verwendung

Vollständige Spülung 1 Liter

P2: VARIO - umweltfreundlich

Ideal für Hotels, Autobahnraststätten, Ausstellungsstandorte, Flughäfen und ähnliche Installationen.
Niedrige Nutzungsfrequenz mit vollständiger Spülung (1 Liter)

Vollständige Spülung 1 Liter

Hohe Nutzungsfrequenz mit kurzer Spülung (0,8 Liter) →

Kurzspülung (0,8 Liter)

P3: HYBRID = Wasserloser Betrieb mit Reinigungsfunktion

In Stadien, Konzerthallen oder Schulen werden Urinale intensiv genutzt, gefolgt von einer Pause. Die LAUFEN-Steuerung kann so programmiert werden, dass nach der ersten Nutzung nicht gespült wird.

15 Minuten nach der ersten Nutzung reinigt eine 3-Liter-Spülung das Urinal sorgfältig.

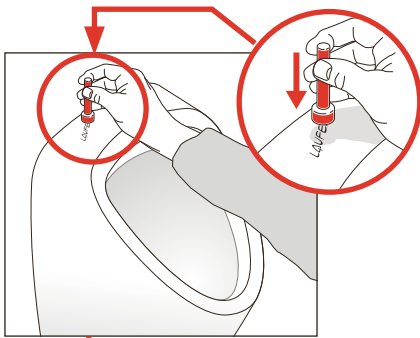
Mehrfache Nutzung innerhalb 15 Minuten

15 min

1x 3 Liter-spülung

keine Spülung

Einstellen der Spülprogramme



Magnetschlüssel auf Logo **LAUFEN** setzen und halten

Magnetschlüssel von Logo **LAUFEN** wieder entfernen

1. beeeeep
2. beeeeep
3. beeeeep
4. beeeeep (4 x „beep“ während ca. 5 Sekunden)

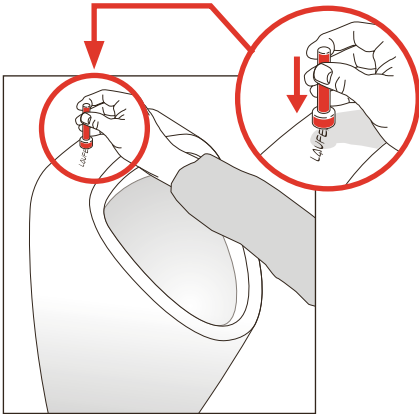
5 Sekunden Pause

5. beeeeep → **P1: STANDARD (Voreinstellung)**

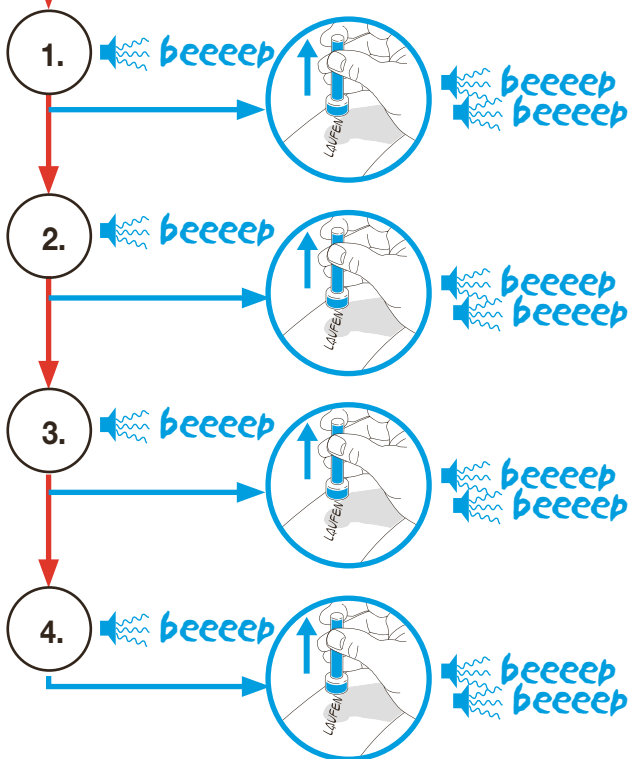
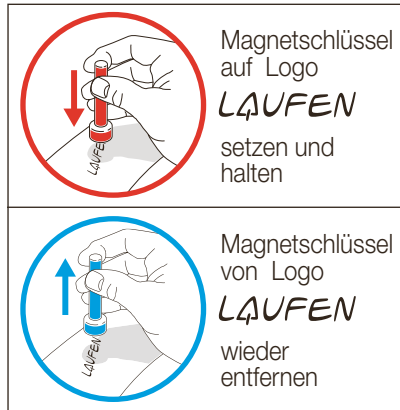
6. beeeeep → **P2: VARIO umweltfreundlich**

7. beeeeep → **P3: HYBRID wasserloser Betrieb mit Reinigungsfunktion**

Reinigung und Diagnose aktivieren



Symbolerklärung



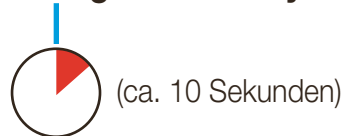
Reinigungsprogramme

5-minütige Pause: Spülprogramm stoppt für 5 Minuten (während Pause Pieptöne), damit Urinal von Hand gereinigt werden kann. Anschliessend wird vollständige Spülung aktiviert. Steuerung wechselt wieder in voreingestellte Betriebsart.

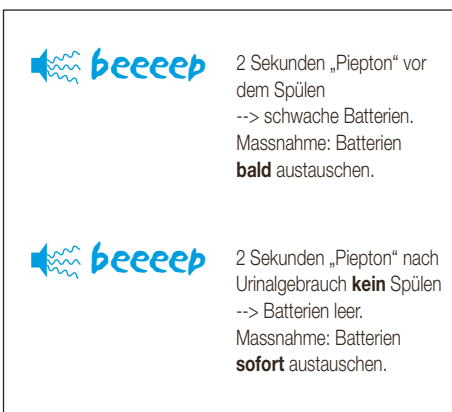
Vollständige Spülung: Eine Spülung ist aktiviert. Steuerung wechselt wieder in voreingestellte Betriebsart.

Intervallreinigung: Steuerung initiiert 5 kurze Spülungen in voreingestellten Intervallen von 2 Minuten. Dadurch kann beispielsweise ein Entkalker wirken. Schliesslich vollständige Spülung, nach der die Steuerung wieder in die voreingestellte Betriebsart zurückkehrt.

Diagnose des Systems



Batteriemonitor



**1 x „beep“ + Spülung = System o.k.
1 x „beep“ keine Spülung = Problem mit Magnetventil**

Bitte prüfen:

1. Anschluss Steuerung <-> Magnetventil
2. Wasseranschluss
3. Magnetventil



2 x „beep“ = Sensor-Problem

Bitte prüfen:

1. Anschluss Steuerung <-> Sensor
2. Sensor
3. Elektronikmodul



3 x „beep“ = Batterien schwach: austauschen

Programmes de chasse d'eau

P1: STANDARD (préréglage)

S'applique à de nombreuses installations: **Chasse d'eau 1 litre après chaque usage**

Chasse d'eau plein débit (1 litre)

P2: VARIO - ménage l'environnement

L'équipement idéal pour hôtels, aires d'autoroute, musées, expositions, aéroports et installations similaires.

Usage normal à chasse d'eau plein débit (1 litre)

Chasse d'eau plein débit (1 litre)

Usage fréquent à chasse d'eau brève (0,8 litre)

Chasse d'eau brève (0,8 litre)

P3: HYBRIDE = sans eau avec fonction nettoyage

Dans les stades, salles de concert ou écoles, les urinoirs sont utilisés intensément, un usage qui est suivi d'une pause. L'urinoir LAUFEN peut être programmé pour éviter que la chasse d'eau ne se déclenche après le premier usage.

15 minutes après le premier usage, une chasse d'eau de 3 litre nettoie entièrement l'urinoir.

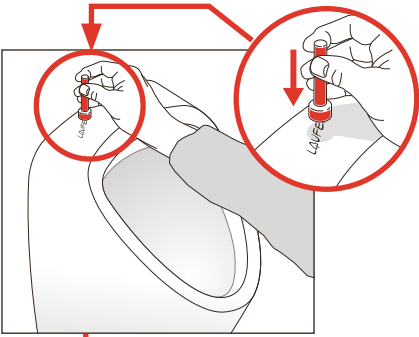
15 min

Usages multiples pendant 15 minutes →

Chasse d'eau de **1x** 3 litres

Pas de chasse d'eau Pas de chasse d'eau

Régler les programmes de chasse d'eau

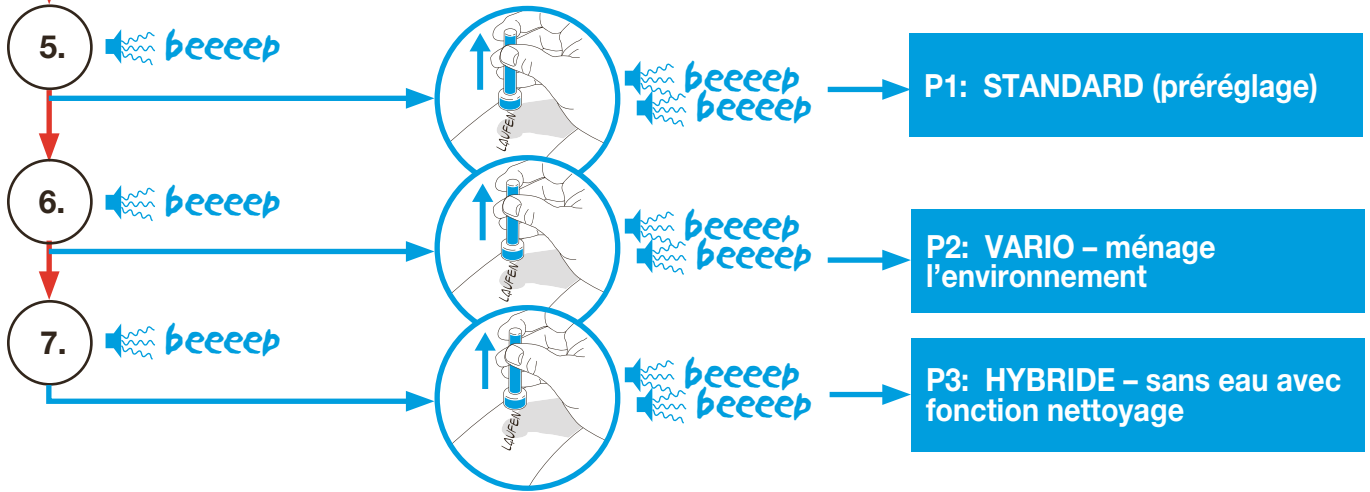


Placer la clé magnétique sur **LAUFEN** le logo et l'y maintenir

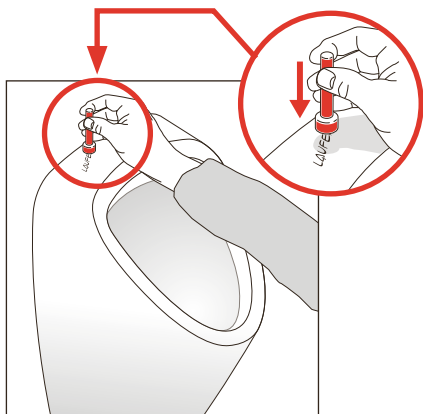
Enlever la clé magnétique de dessus le logo **LAUFEN**

1. beeeep
2. beeeep
3. beeeep
4. beeeep (4 x „beep“ durant environ 5 secondes)

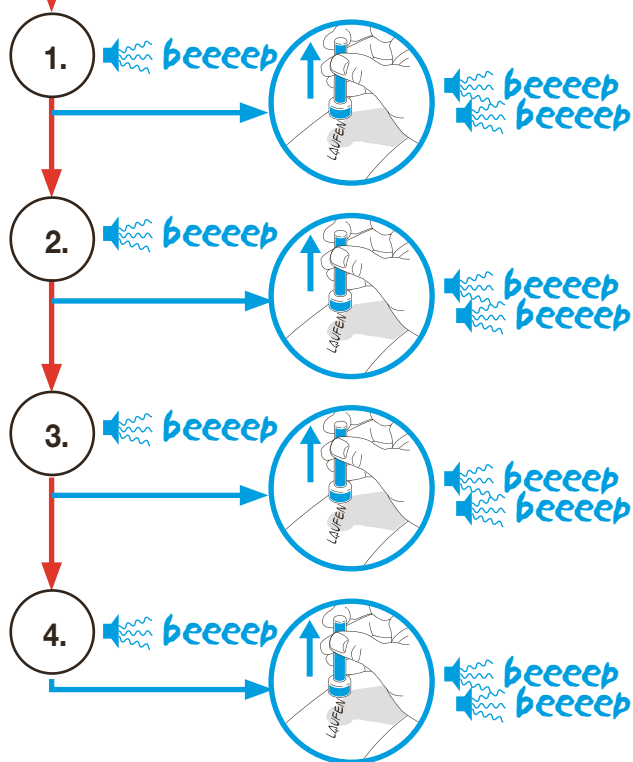
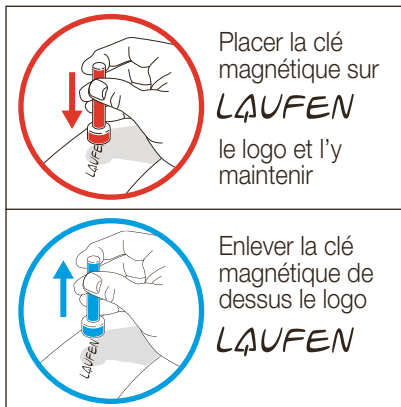
Pause de 5 secondes:



Activer Nettoyage et Diagnostic



Explication des symboles



Programmes de nettoyage

5 minutes d'arrêt: le programme chasse d'eau s'interrompt durant 5 minutes (bips pendant la pause) pour permettre de nettoyer manuellement l'urinoir. A la fin de ces opérations, le nettoyage complet est activé. L'unité de contrôle revient alors au mode pré-réglage.

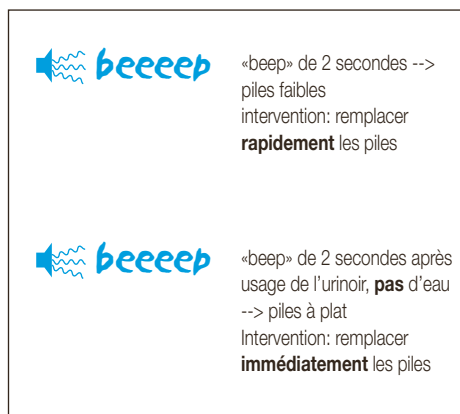
Chasse d'eau plein débit: la chasse d'eau est activée. L'unité de contrôle revient au mode pré-réglage.

Nettoyage intermédiaire: l'unité de contrôle déclenche 5 chasses d'eau brèves, à intervalles préprogrammés de 2 minutes. Ce qui, par exemple, permet au détarteur de travailler. Cette opération s'achève par une chasse d'eau plein débit, après quoi l'unité de contrôle revient au mode pré-réglage.

Diagnostic du système



Moniteur de piles



1 x «beep» + chasse d'eau = système O.K.
1 x «beep» sans chasse d'eau = problème de valve solénoïde









Veuillez vérifier:
1. la connexion de l'unité de contrôle <-> valve solénoïde
2. l'arrivée d'eau
3. la valve solénoïde

2 x «beep» = problème de capteur

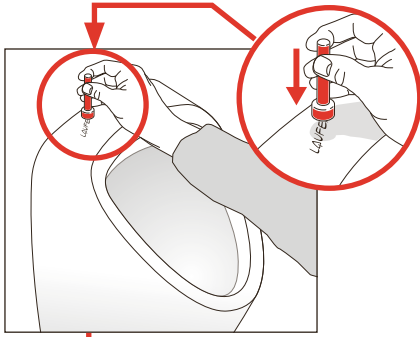
Veuillez vérifier:
1. la connexion de l'unité de contrôle <-> capteur
2. les capteurs
3. le module électronique

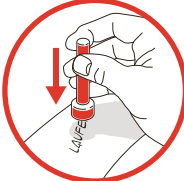
3 x «beep» = piles faibles: les remplacer

Programmi di sciacquo

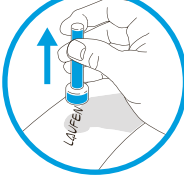
<p>P1: STANDARD (preimpostato)</p> <p>Adatto per molti impianti: uno sciacquo di 1 litro dopo ogni uso</p>  <p>sciacquo completo (1 litro)</p>	<p>P2: VARIO - ecologico</p> <p>La regolazione ideale per alberghi, servizi autostradali, fiere, aeroporti e impianti similari.</p> <p>Uso ridotto con sciacquo completo (1 litro)</p>  <p>sciacquo completo (1 litro)</p>  <p>sciacquo completo (1 litro)</p> <p>Uso elevato con sciacquo ridotto (0,8 litri)</p>  <p>Sciacquo ridotto (0,8 litri)</p>  <p>Sciacquo ridotto (0,8 litri)</p>  <p>Sciacquo ridotto (0,8 litri)</p>  <p>Sciacquo ridotto (0,8 litri)</p>	<p>P3: HYBRID = Modo senz'acqua con funzione di lavaggio</p> <p>Negli stadi, nelle sale da concerto o nelle scuole gli orinatoi vengono utilizzati intensamente, poi segue una pausa. Il sistema LAUFEN può essere programmato in modo da non sciacquare dopo il primo uso.</p> <p>15 minuti dopo il primo uso uno sciacquo di 3 litri lava a fondo l'orinatoio.</p>  <p>15 min utilizzo multiplo durante 15 min 1x 3 Liter-spülung</p> <p>nessuno sciacquo</p>
--	---	---

Impostazione dei programmi di sciacquo





Poggiare e tenere ferma la chiave magnetica sul logo **LAUFEN**



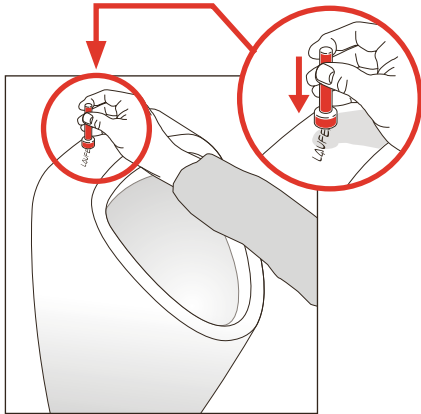
Togliere nuovamente la chiave magnetica dal logo **LAUFEN**

1. beeeeep
2. beeeeep
3. beeeeep
4. beeeeep (4 „beep“ durante c. 5 secondi)

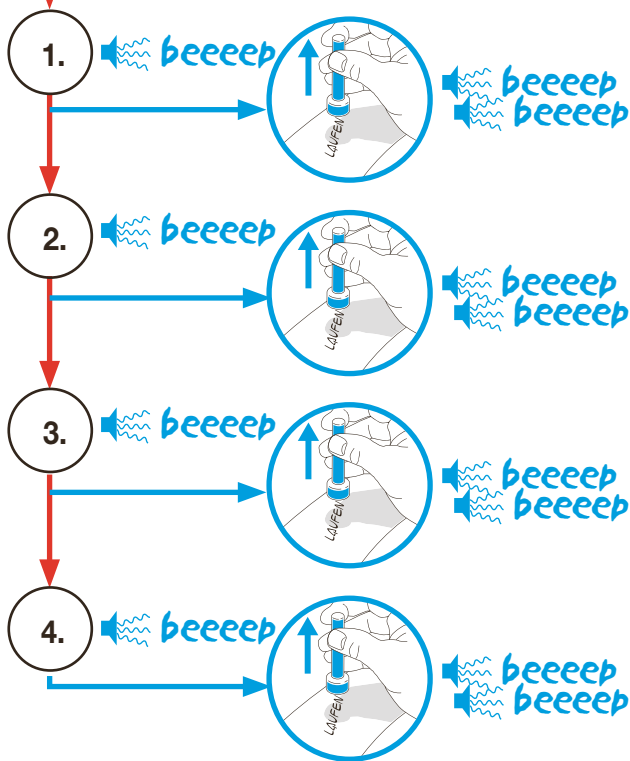
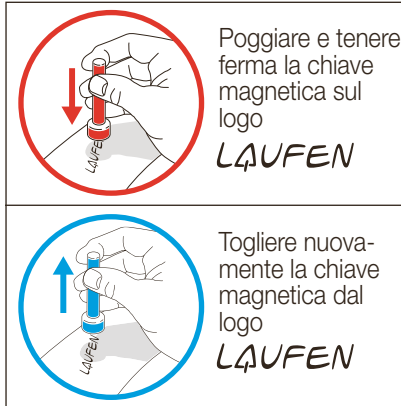
Pause di 5 secondis

5. beeeeep beeeeep → **P1: STANDARD (preimpostato)**
6. beeeeep beeeeep → **P2: VARIO ecologico**
7. beeeeep beeeeep → **P3: HYBRID Modo senz'acqua con funzione di lavaggio**

Attivare pulizia e diagnosi



Significato dei simboli



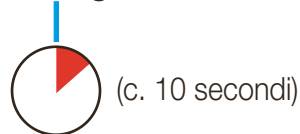
Programmi di lavaggio

5 minuti di pausa: il programma di sciacquo si ferma per 5 minuti (bip durante la pausa) per permettere di pulire l'orinatoio a mano. Successivamente si attiva lo sciacquo completo. L'unità di controllo torna al modo preimpostato.

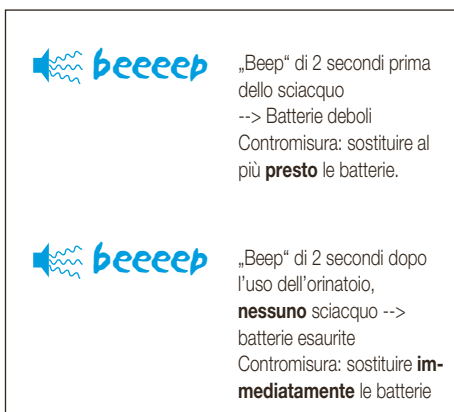
Sciacquo completo: viene attivato uno sciacquo. L'unità di controllo torna al modo preimpostato.

Lavaggio intervallato: l'unità di controllo effettua 5 brevi sciacqui agli intervalli preimpostati di 2 minuti. Questo consente, per esempio, di lasciar agire il decalcificatore. Alla fine arriva uno sciacquo completo, dopo di che l'unità di controllo ritorna al modo preimpostato.

Diagnosi del sistema

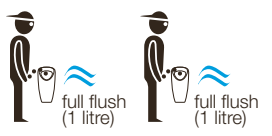


Controllo batterie




Flush programs

P1: STANDARD (pre-set)
 Suitable for many installations:
A 1 litre flush after each use

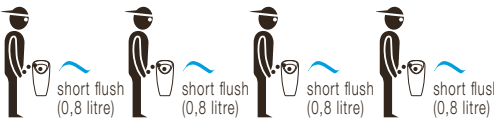


P2: VARIO - environmentally friendly
 The ideal setting for hotels, motorway services, exhibition sites, airports and similar installations.

Low usage à full flush (1 litre)



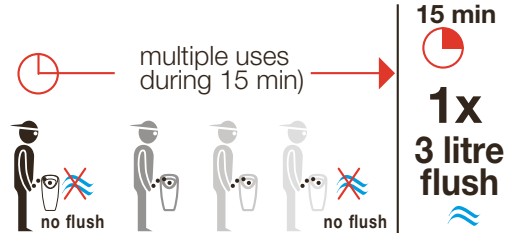
High usage à short flush (0,8 litre)



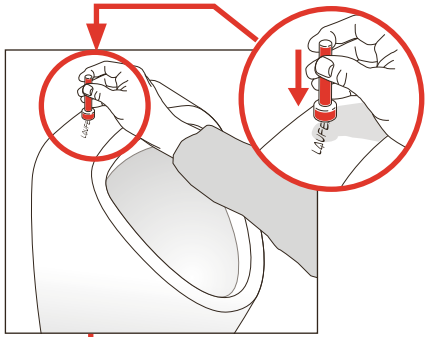
P3: HYBRID = Waterless with cleaning function

In stadiums, concert halls or schools, urinals will be used intensively followed by a pause. LAUFEN steering can be programmed to not flush after the first usage.


15 minutes after the first usage, a 3 litre flush will thoroughly clean the urinal.



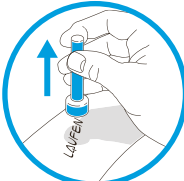
Setting flush programs



Place the magnetic key on the **LAUFEN** logo and hold it there

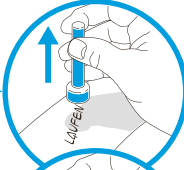
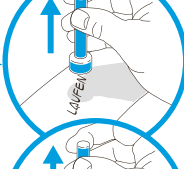



Now remove the magnetic key from the logo **LAUFEN** again

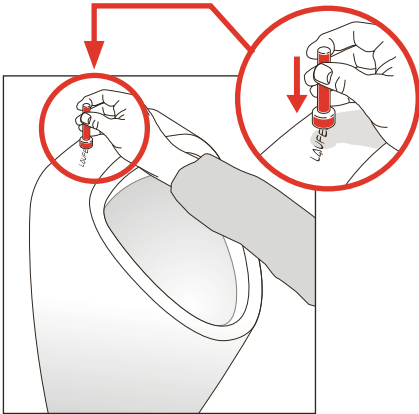


1. beeeep
2. beeeep
3. beeeep
4. beeeep (4 x "beep" for about 5 seconds)

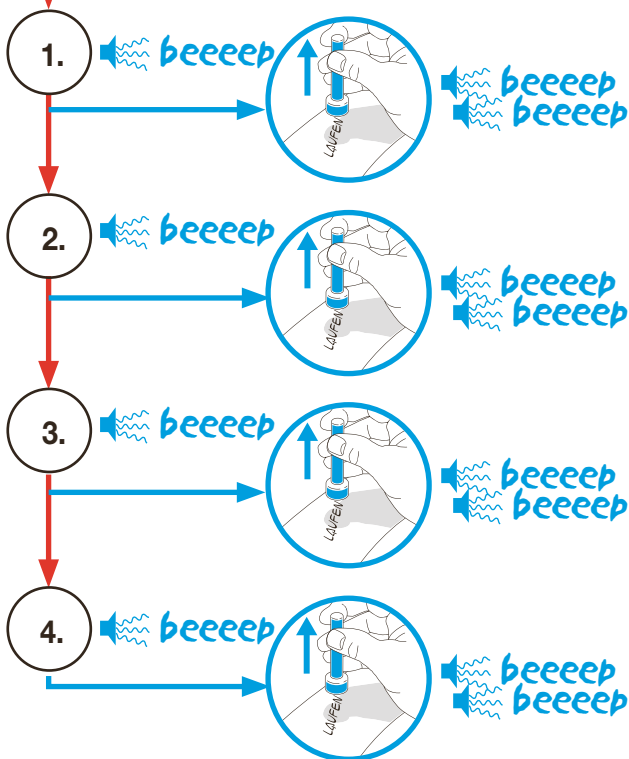
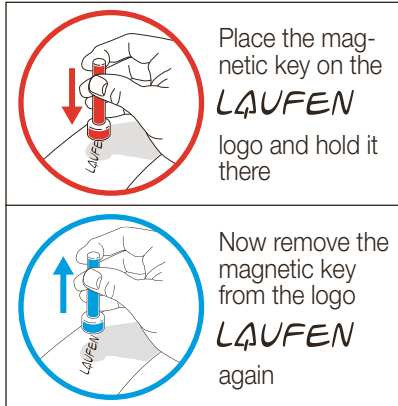
Pause of 5 seconds

5.	beeeep beeeep		beeeep beeeep	P1: STANDARD (pre-set)
6.	beeeep beeeep		beeeep beeeep	P2: VARIO environmentally friendly
7.	beeeep beeeep		beeeep beeeep	P3: HYBRID waterless with cleaning function

Activate cleaning and diagnosis



Explanation of symbols



Cleaning programs

5 minute suspension: The flushing program stops for 5 minutes ("beeps" during the pause) to allow the urinal to be cleaned manually. The complete rinse is now activated. The control unit switches back to its pre-set mode.

Full flush: A flush is activated. The control unit switches back to its pre-set mode.

Interval cleaning: The control unit initiates 5 short flushes at preset intervals of 2 minutes. This allows, for example, descaler to work. Finally there is a full flush, after which the control unit returns to the pre-set mode.

Diagnosis of system



Battery monitor

	2 seconds „beep“ prior flushing --> weak batteries Action item: Replace battery shortly
	2 seconds „beep“ after use of urinal, no flushing --> dead batteries Action item: Replace battery immediately

(approx. 10 seconds)

1 x „beep“ + flush = system o.k.
1 x „beep“ no flush = solenoid valve problem

Please check:

1. Connection control unit <-> solenoid valve
2. Water supply
- 3. Solenoid valve**

2 x „beep“ = sensor problem

Please check:

1. Connection control unit <-> sensor
2. Sensor
3. Electronic module

3 x „beep“ = Weak batteries: Replace

Programas de descarga

P1: ESTANDAR
(preestablecido)

Indicado para muchas instalaciones:
Descarga de 1 litro tras cada uso

descarga completa (1 litro) descarga completa (1 litro)

P2: VARIO - ecológico

Configuración ideal para hoteles, servicios de carretera, sedes de exposiciones, aeropuertos e instalaciones similares.

Uso reducido – una descarga completa (1 litro)

descarga completa (1 litro) descarga completa (1 litro)

Uso frecuente – una descarga corta (0,8 litros)

descarga corta (0,8 litros) descarga corta (0,8 litros) descarga corta (0,8 litros) descarga corta (0,8 litros)

P3: HYBRID = modo sin agua con función de limpieza

En estadios, salas de conciertos o escuelas, los urinarios se utilizarán de forma intensiva seguido de una pausa. La dirección LAUFEN puede programarse para no realizar ninguna descarga tras el primer uso.

15 minutos después del primer uso, una descarga de 3 litros se encargará de limpiar a fondo el urinario.

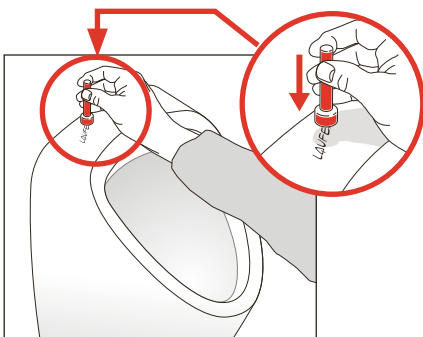
múltiples usos durante 15 minutos →

15 min

1x descarga de 3 litros

sin descarga sin descarga

Configuración de los programas de descarga



Poner y detener la llave magnética en posición LAUFEN

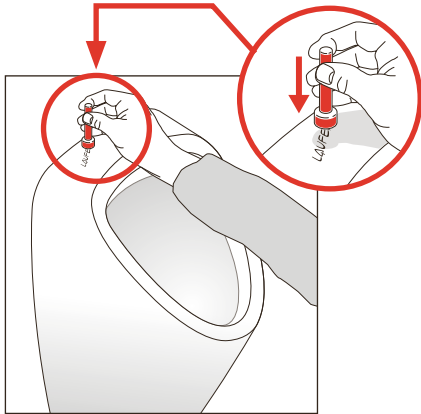
Volver a retirar la llave magnética de la posición LAUFEN

1. beeeep
2. beeeep
3. beeeep
4. beeeep (4 x "beep" durante 5 segundos aprox.)

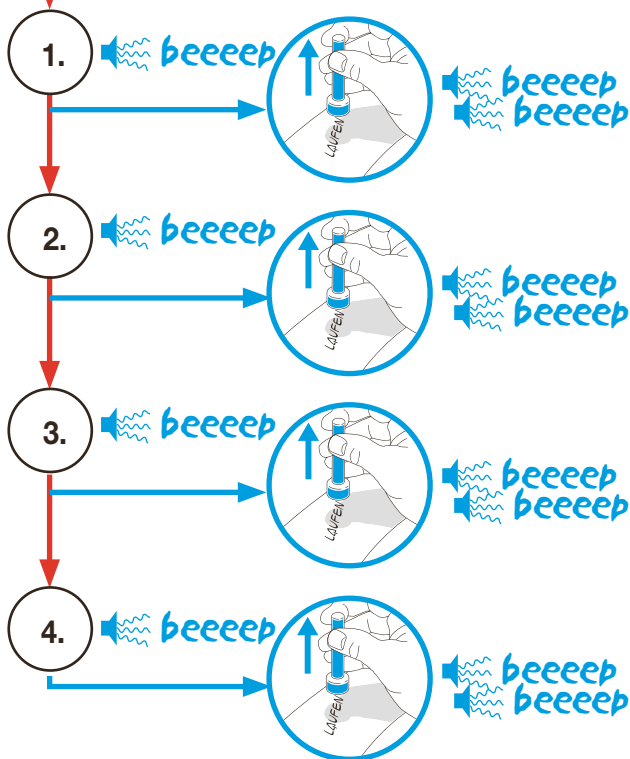
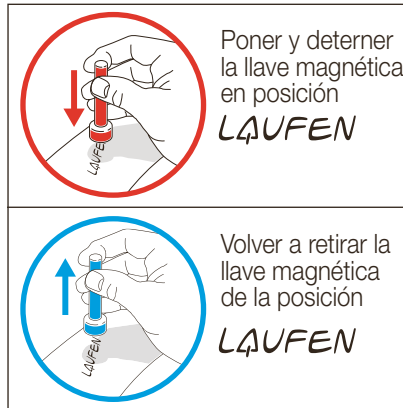
Pause de 5 segundos

5. beeeep beeeep → **P1: STANDARD (preestablecido)**
6. beeeep beeeep → **P2: VARIO ecológico**
7. beeeep beeeep → **P3: HYBRID modo sin agua con función de limpieza**

Activar limpieza y diagnosis



Leyenda



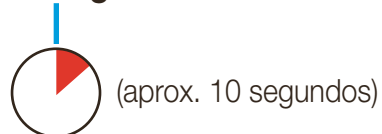
Programas de limpieza

Suspensión 5 minutos: El programa de descarga se detiene durante 5 minutos (durante las pausas de los sonidos pío) para permitir la limpieza manual del urinario. Conectándolo se activa el lavado completo. La unidad de control vuelve al modo preestablecido.

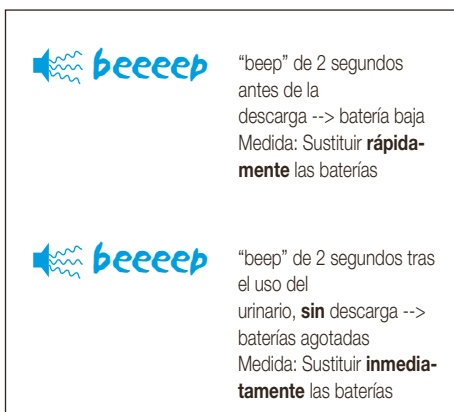
Descarga completa: Se activa una descarga. La unidad de control vuelve al modo preestablecido.

Intervalo de limpieza: La unidad de control inicia 5 descargas cortas a intervalos preestablecidos de 2 minutos. Esto permite, por ejemplo, que trabaje el desincrustador. Por último, se realiza una descarga completa tras la cual la unidad de control vuelve al modo preestablecido.

Diagnosis del sistema



Control de la batería



(aprox. 10 segundos)

beeeeep

1 “beep” + descarga = sistema correcto
1 “beep” sin descarga = problema de la válvula solenoide

Compruebe:

1. Conexión de la unidad de control <-> válvula solenoide
2. Suministro de agua
3. Válvula solenoide

2 “beep” = problema del sensor

Compruebe:

1. Conexión de la unidad de control <-> sensor
2. Sensor
3. Módulo electrónico

3 “beep” = batería baja: Cambiar

beeeeep
beeeeep
beeeeep

Spoelprogramma's

P1: STANDARD
(vooraf ingesteld)

Geschikt voor veel installaties:
A 1 liter spoeling na elk gebruik




volledige spoeling (1 liter) volledige spoeling (1 liter)

P2: VARIO - milieuvriendelijk


Ideaal voor hotels, wegrestaurants, expositieruimten, luchthavens en dergelijke installaties.

Laag gebruik met volledige spoeling (1 liter)



volledige spoeling (1 liter) volledige spoeling (1 liter)

Hoog gebruik met korte spoeling (0,8 liter)




korte spoeling (0,8 liter) korte spoeling (0,8 liter) korte spoeling (0,8 liter) korte spoeling (0,8 liter)

P3: HYBRID = waterloze werking met reinigende functie

In stadions, concertzalen of scholen worden urinoirs intensief gebruikt, gevolgd door een pauze. LAUFEN kan geprogrammeerd worden om na het eerste gebruik niet te spoelen.

15 minuten na het eerste gebruik reinigt een spoeling met 3 liter het urinoir grondig.



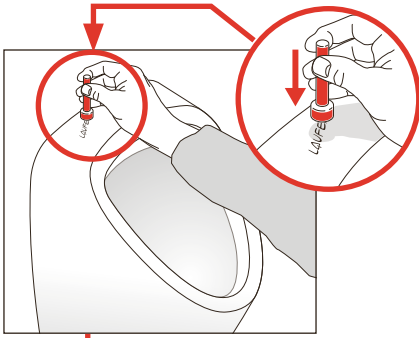
veelvoudig gebruik gedurende 15 min.


15 min

1x spoeling met 3 liter

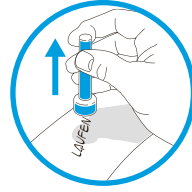
geen spoeling geen spoeling

Instelling van de spoelprogramma's





Magneetsleutel op logo **LAUFEN** brengen en houden




Magneetsleutel terug van logo **LAUFEN** halen

1. beeeep
2. beeeep
3. beeeep
4. beeeep (4 x „beep“ gedurende ong. 5 seconden)

Pauze van 5 seconden

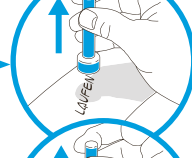
5. beeeep



beeeep beeeep

P1: STANDARD (vooraf ingesteld)


6. beeeep



beeeep beeeep

P2: VARIO milieuvriendelijk

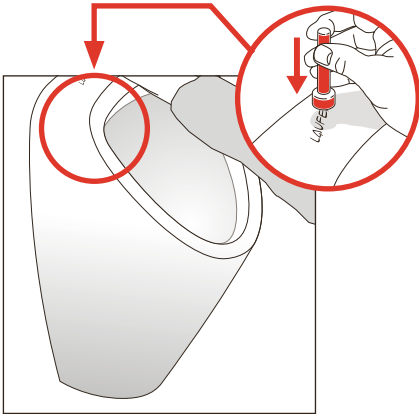
7. beeeep



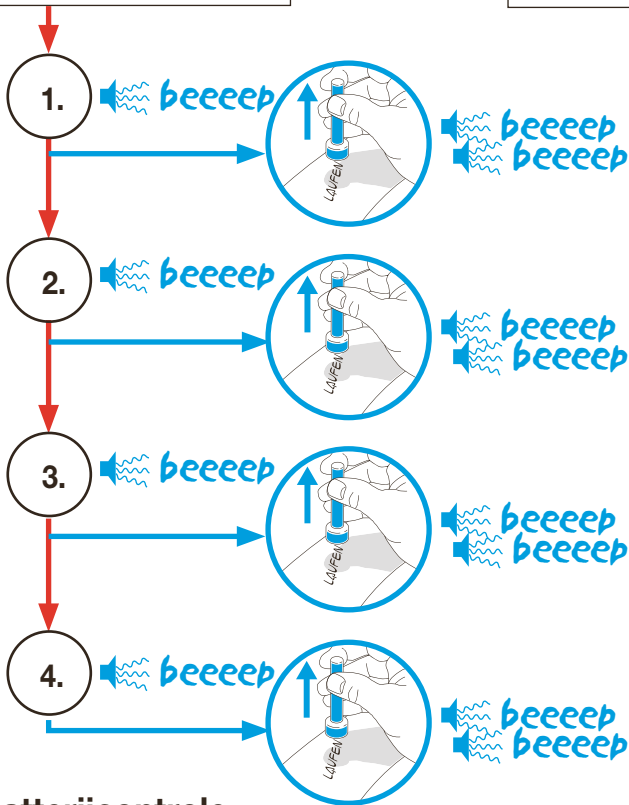
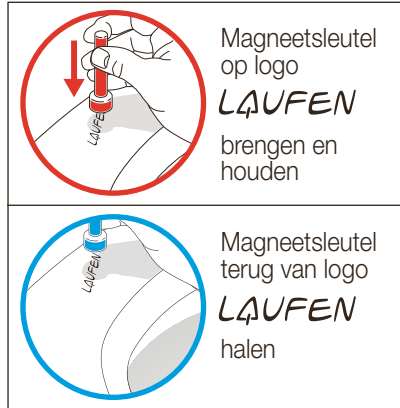
beeeep beeeep

P3: HYBRID waterloze werking met reinigende functie

Reiniging en diagnose activeren



Symboolverklaring



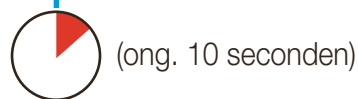
Reinigingsprogramma's

5 minuten onderbreking: Het spoelprogramma stopt 5 minuten (gedurende pauze pieptonen), zodat het urinoir manueel gereinigd kan worden. Vervolgens wordt volledige spoeling geactiveerd. De besturingseenheid gaat terug naar de vooraf ingestelde werking.

Volledige spoeling: Een spoeling wordt geactiveerd. De besturingseenheid gaat terug naar de vooraf ingestelde werking.

Intervalreiniging: De besturingseenheid start 5 korte spoelingen op vooraf ingestelde intervallen van 2 minuten. Hierdoor kan de ontkalker bijv. werken. Tenslotte is er een volledige spoeling, waarna de besturingseenheid terug naar de vooraf ingestelde werking gaat.

Systemdiagnose



1 x „beep“ + spoeling = systeem in orde
1 x „beep“ geen spoeling = probleem elektromagnetische klep

Controleer:

1. Aansluiting besturingseenheid <-> elektromagnetische klep
2. Watertoevoer
3. Elektromagnetische klep



2 x „beep“ = probleem sensor

Controleer:

1. Aansluiting besturingseenheid <-> sensor
2. Sensor
3. Elektronische module



3 x „beep“ = zwakke batterijen:
Vervang

Batterijcontrole



2 seconden „beep“ vóór het spoelen
--> zwakke batterijen
Maatregel: vervang batterij **binnenkort**



2 seconden „beep“ na gebruik urinoir,
geen spoeling --> lege batterijen
Maatregel: Vervang batterij **onmiddellijk**

LAUFEN

Laufen Bathrooms AG
Wahlenstrasse 46
CH-4242 Laufen, Switzerland
www.laufen.com